

**Legend**

**Kitsap County Zoning Designations**

**No Action Alternative**

- Rural Residential (1 DU/5 Ac)
- Rural Protection (1 DU/10 Ac)
- Rural Wooded (1 DU/20 Ac)
- Business Center
- Business Park
- Industrial
- Rural Industrial
- Neighborhood Commercial (10-30 DU/Ac)
- Highway/Tourist Commercial (10-30 DU/Ac)
- Regional Commercial (10-30 DU/Ac)
- Rural Commercial
- Rural Employment Center
- Twelve Trees Employment Center
- Urban Restricted (1-5 DU/Ac)
- Urban Low Residential (5-9 DU/Ac)
- Senior Living Homestead (5-9 DU/Ac)
- Urban Cluster Residential (5-9 DU/Ac)
- Urban Medium Residential (10-18 DU/Ac)
- Urban High Residential (19-30 DU/Ac)
- Mixed Use (10-30 DU/Ac)
- Urban Village Center (up to 18 DU/Ac)
- Light Industrial
- Residential Low
- Park (Kitsap County)
- Tribal Land
- Incorporated City
- Military
- Suquamish Village Commercial
- Suquamish Village Low Residential
- Suquamish Village Residential
- Rural Historic Town Commercial
- Rural Historic Town Residential
- Rural Historic Town Waterfront
- Keyport Village Commercial
- Keyport Village Low Residential
- Keyport Village Residential
- Salt Water
- Lake

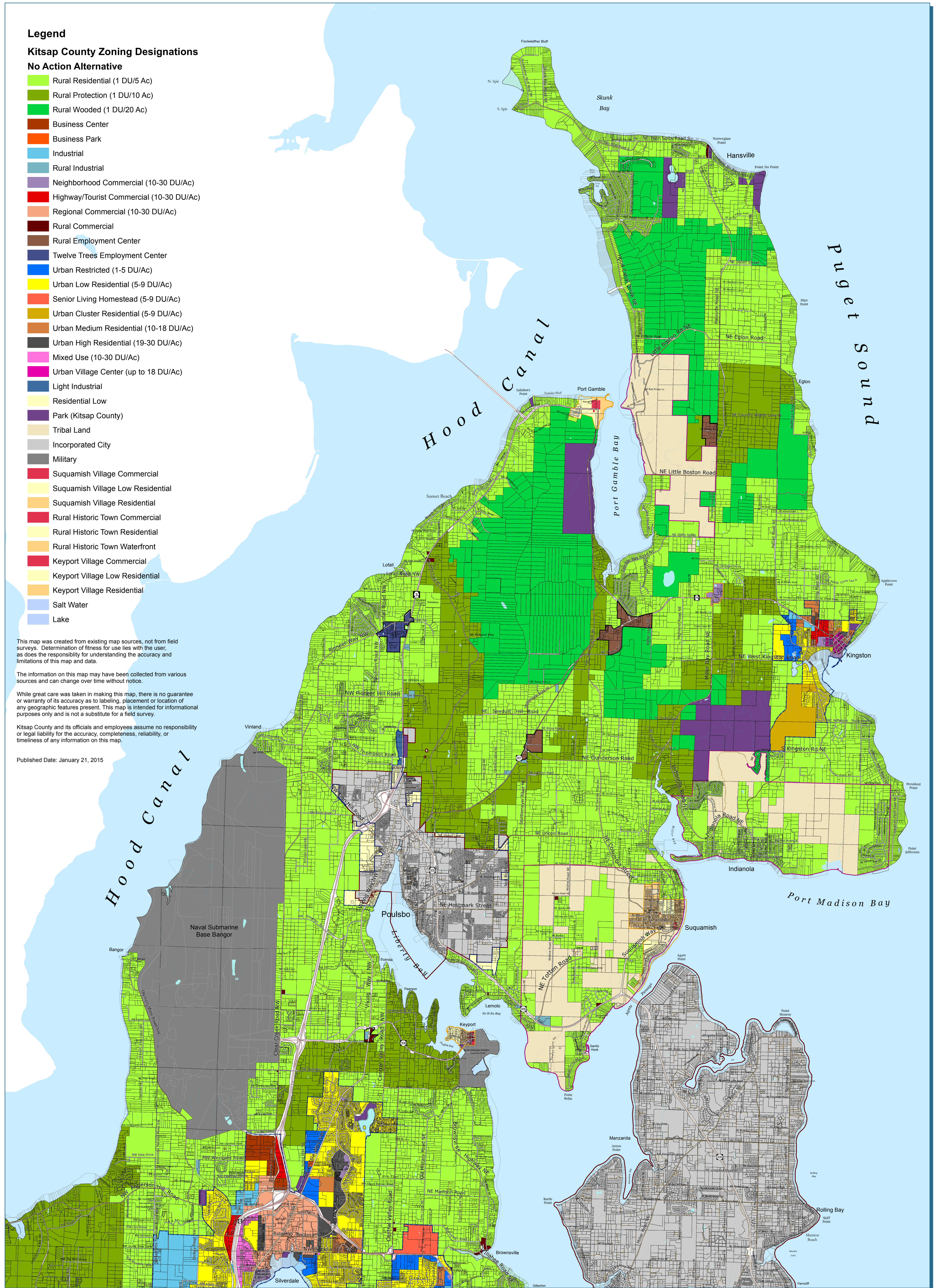
This map was created from existing map sources, not from field surveys. Determination of fitness for use lies with the user, as does the responsibility for understanding the accuracy and limitations of this map and data.

The information on this map may have been collected from various sources and can change over time without notice.

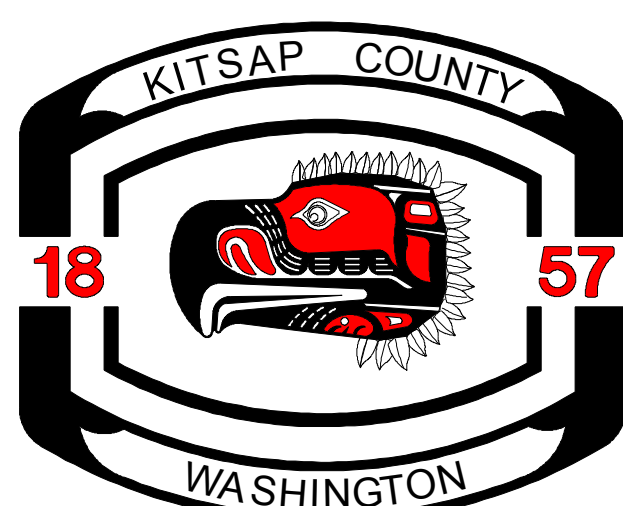
While great care was taken in making this map, there is no guarantee or warranty of its accuracy as to labeling, placement or location of any geographic features present. This map is intended for informational purposes only and is not a substitute for a field survey.

Kitsap County and its officials and employees assume no responsibility or legal liability for the accuracy, completeness, reliability, or timeliness of any information on this map.

Published Date: January 21, 2015



DRAFT No Action Alternative (existing zoning map)



Kitsap County Department of Community Development  
 614 Division Street, MS-36, Port Orchard, Washington 98366  
 VOICE (360) 337-5777 \* FAX (360) 337-4925

North Kitsap

