

**Legend**

**Kitsap County Zoning Designations**

**Staff Recommended**

- Rural Residential (1 DU/5 Ac)
- Rural Protection (1 DU/10 Ac)
- Rural Wooded (1 DU/20 Ac)
- Forest Resource Lands (1 DU/40 Ac)
- Business Center
- Business Park
- Industrial
- Rural Industrial
- Neighborhood Commercial (10-30 DU/Ac)
- Commercial (10-30 DU/Ac)
- Regional Center (10-30 DU/Ac)
- Low Intensity Commercial (10-30 DU/Ac)
- Rural Commercial
- Urban Restricted (1-5 DU/Ac)
- Greenbelt (1-4 DU/Ac)
- Urban Low Residential (5-9 DU/Ac)
- Urban Cluster Residential (5-9 DU/Ac)
- Urban Medium Residential (10-18 DU/Ac)
- Urban High Residential (19-30 DU/Ac)
- Residential Low
- Park
- Tribal Land
- Incorporated City
- Military
- Public Facility
- Keyport Village Commercial
- Keyport Village Low Residential
- Keyport Village Residential
- Salt Water
- Lake

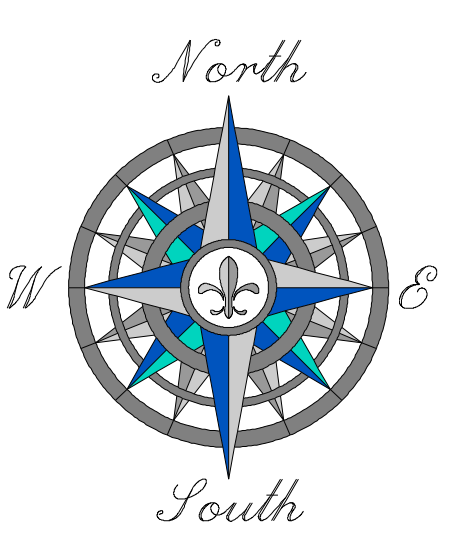
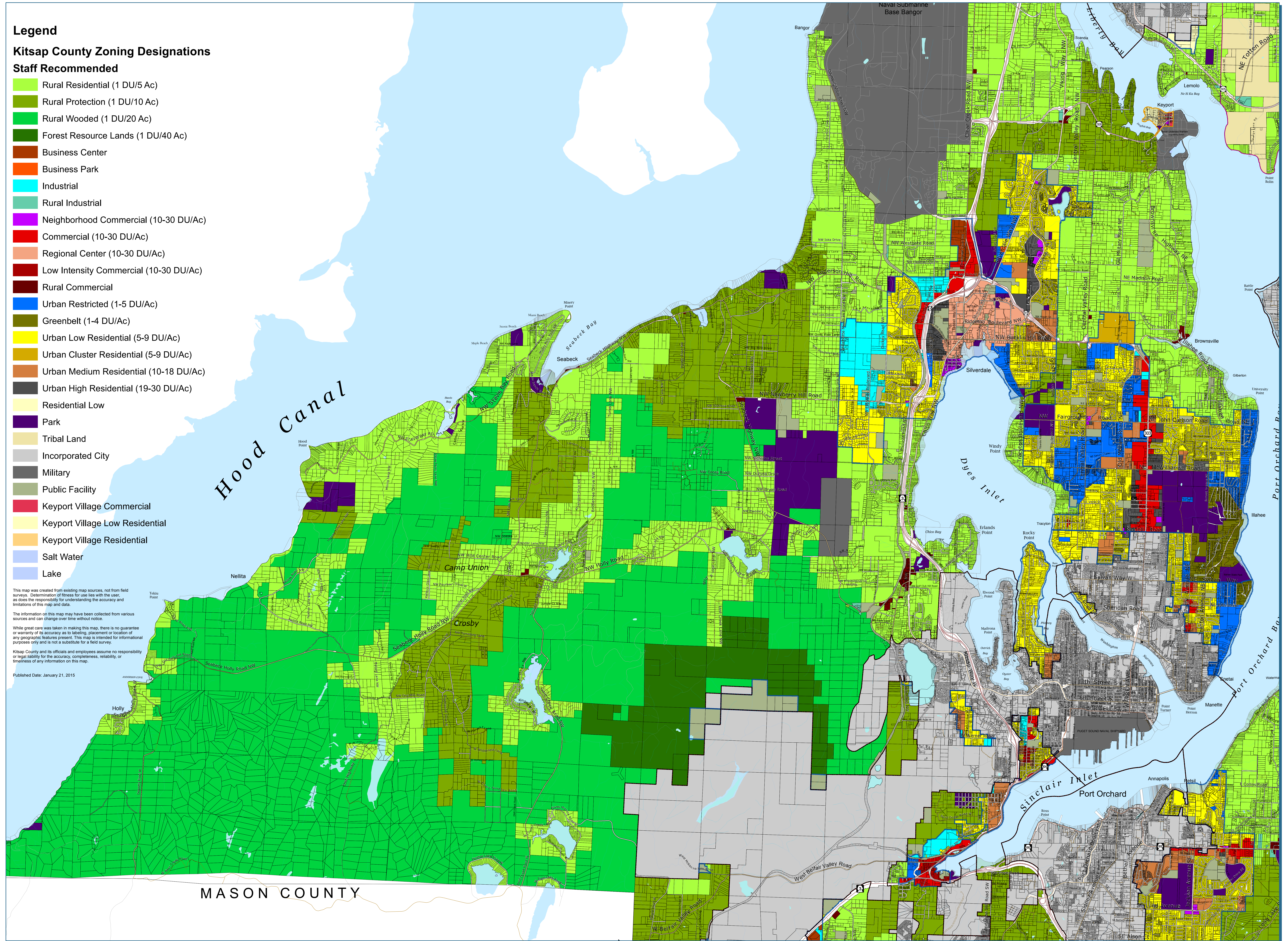
This map was created from existing map sources, not from field surveys. Determination of fitness for use lies with the user, as does the responsibility for understanding the accuracy and limitations of this map and data.

The information on this map may have been collected from various sources and can change over time without notice.

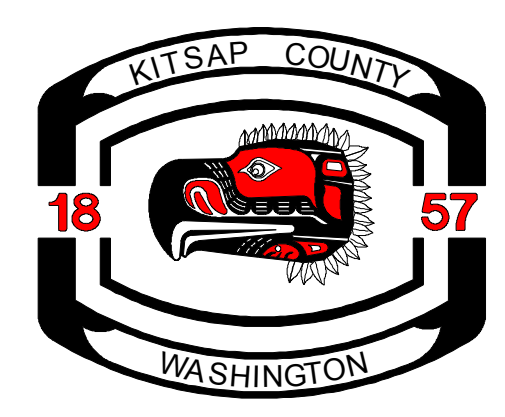
While great care was taken in making this map, there is no guarantee or warranty of its accuracy as to labeling, placement or location of any geographic features present. This map is intended for informational purposes only and is not a substitute for a field survey.

Kitsap County and its officials and employees assume no responsibility or legal liability for the accuracy, completeness, reliability, or timeliness of any information on this map.

Published Date: January 21, 2015



Staff Recommended Preferred Alternative



Kitsap County Department of Community Development  
614 Division Street, MS-36, Port Orchard, Washington 98366  
VOICE (360) 337-5777 \* FAX (360) 337-4925

Central Kitsap

DRAFT



kitsap2036  
Growing for a Better Tomorrow