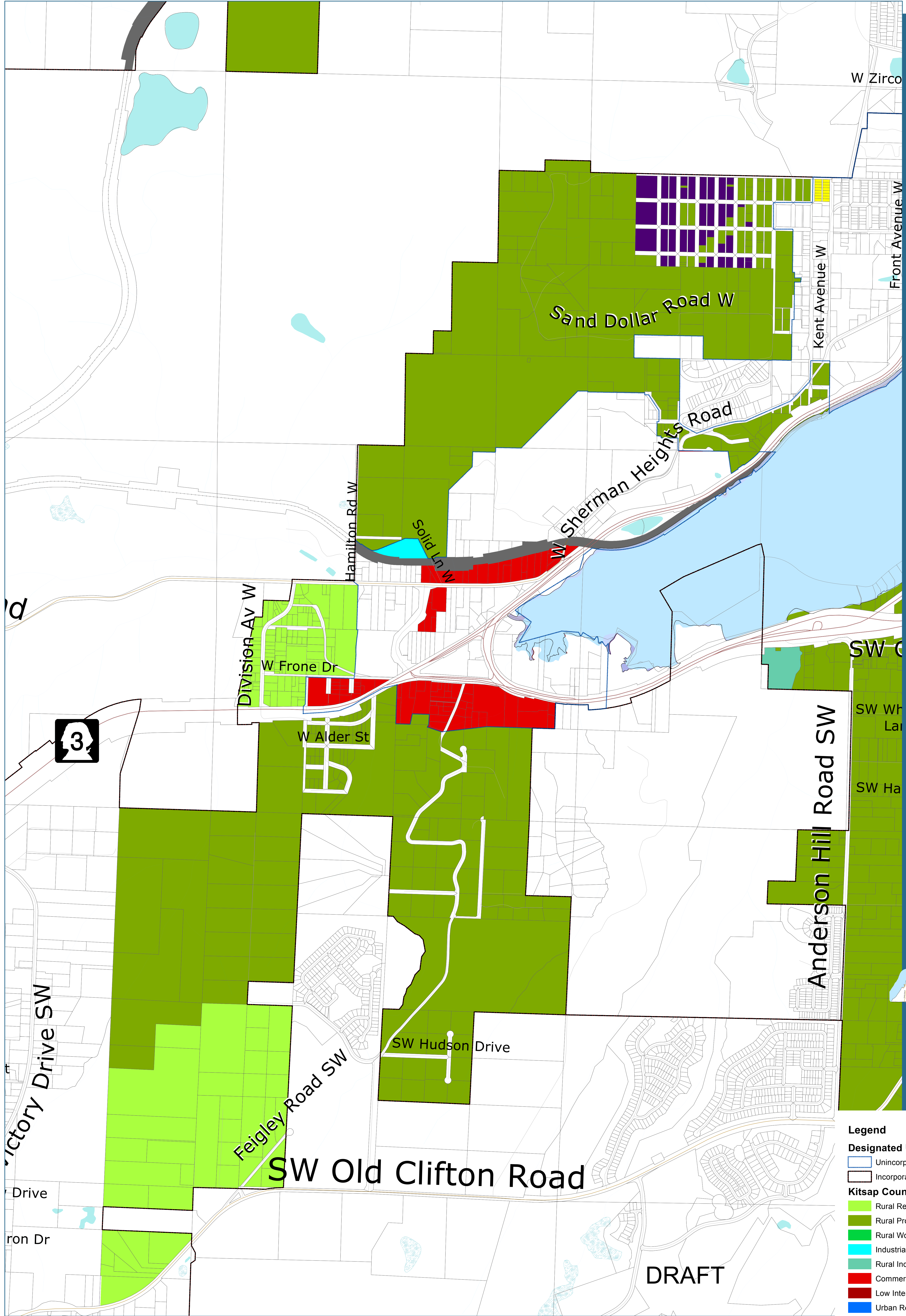
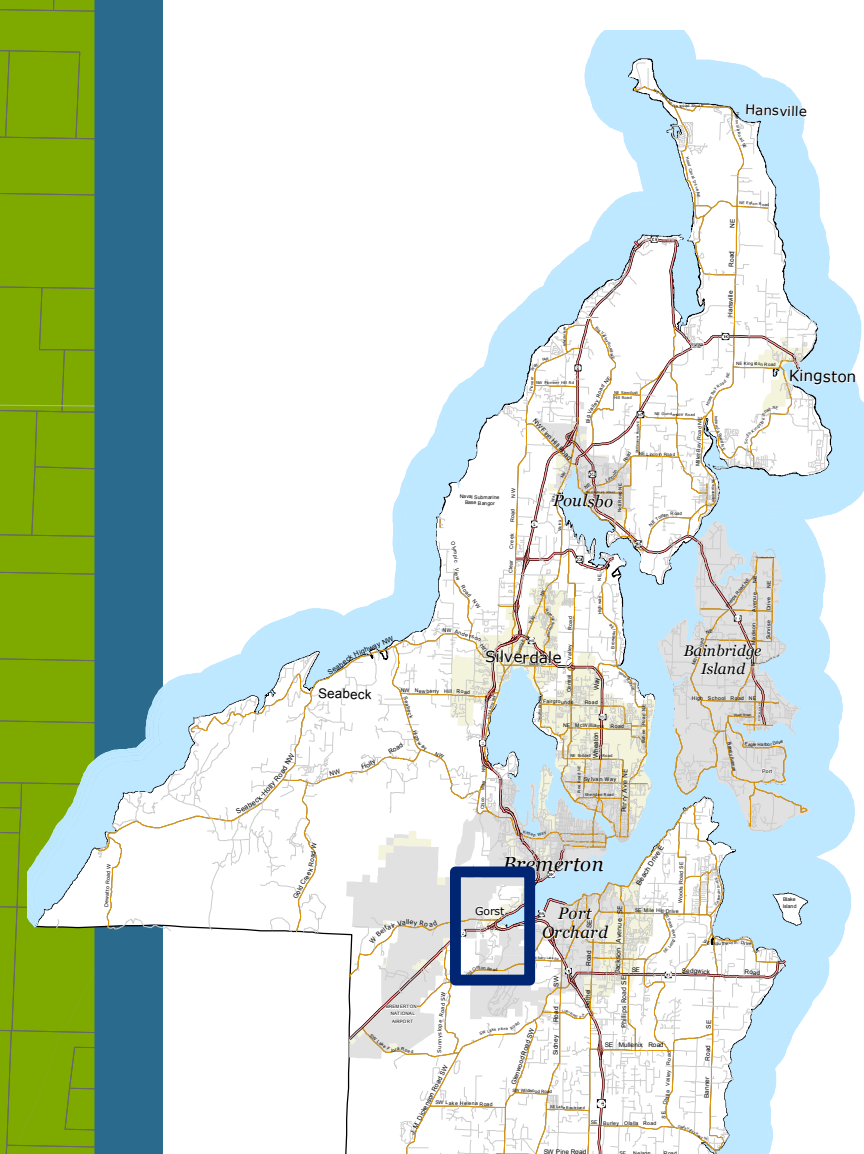


Gorst Preferred Alternative - Zoning Changes



- Legend**
- Designated Urban Growth Areas**
 - Unincorporated Urban Growth Area
 - Incorporated City
 - Kitsap County Zoning Designations**
 - Rural Residential (1 DU/5 Ac)
 - Rural Protection (1 DU/10 Ac)
 - Rural Wooded (1 DU/20 Ac)
 - Industrial
 - Rural Industrial
 - Commercial (10-30 DU/Ac)
 - Low Intensity Commercial (10-30 DU/Ac)
 - Urban Restricted (1-5 DU/Ac)
 - Urban Low Residential (5-9 DU/Ac)
 - Urban Medium Residential (10-18 DU/Ac)
 - Park
 - Incorporated City
 - Military

