

# COMMISSIONER DISTRICT 2

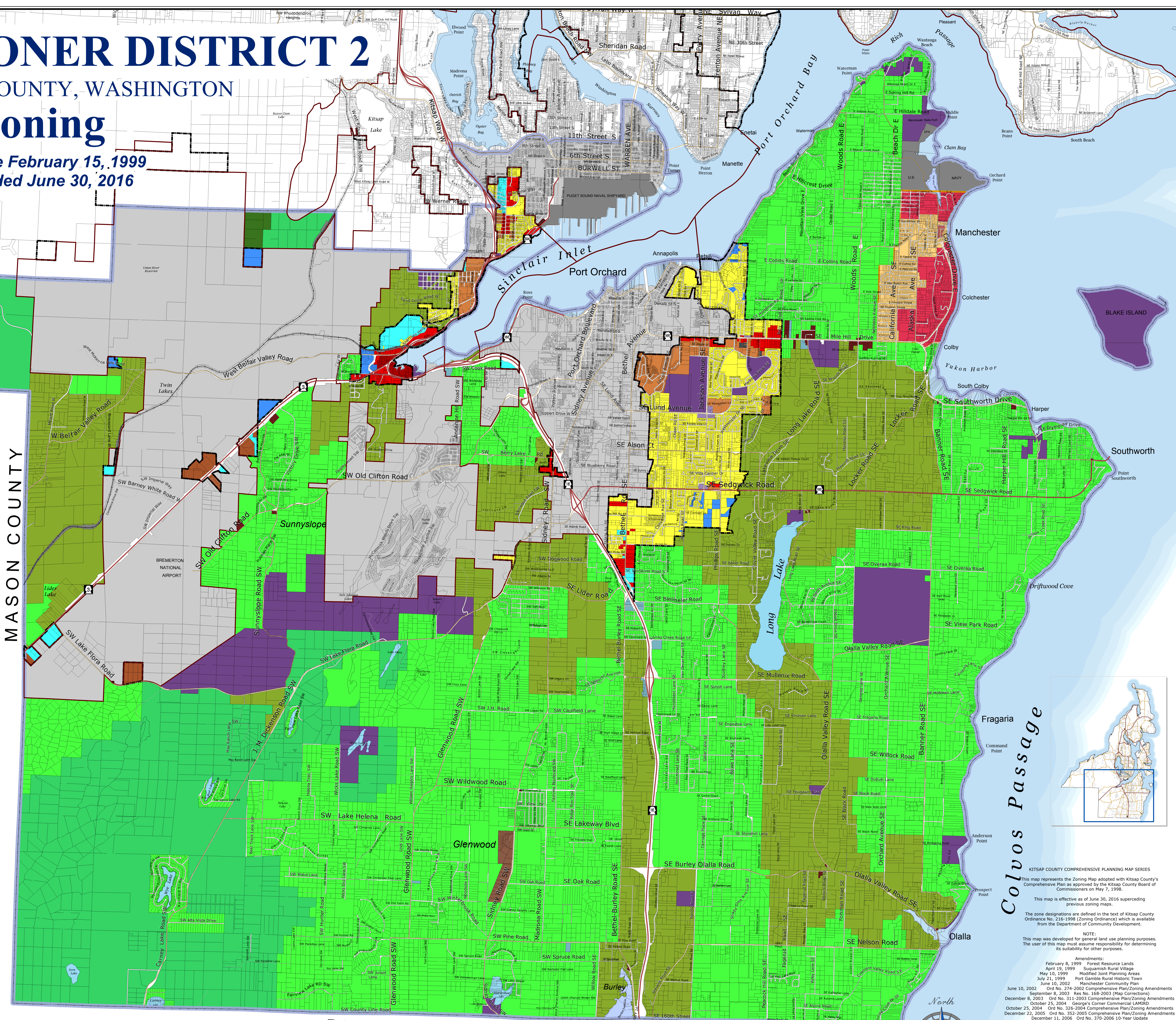
KITSAP COUNTY, WASHINGTON

## Zoning

Effective February 15, 1999  
Amended June 30, 2016

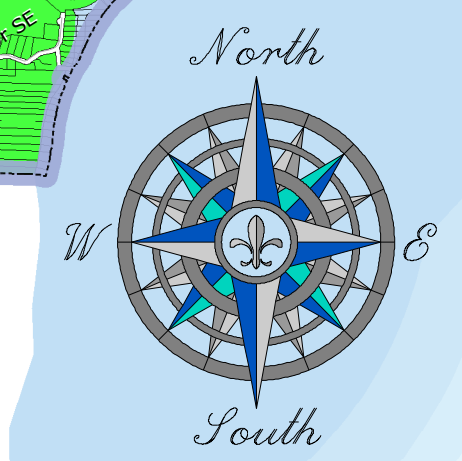
- Rural Residential (1 DU/5 Ac)
- Urban Reserve (1 DU/10 Ac)
- Rural Protection (1 DU/10 Ac)
- Rural Wooded (1 DU/20 Ac)
- Business Center
- Industrial
- Commercial (10-30 DU/Ac)
- Neighborhood Commercial (10-30 DU/Ac)
- Low Intensity Commercial (10-30 DU/Ac)
- Rural Commercial
- Rural Industrial
- Urban Restricted (1-5 DU/Ac)
- Urban Low Residential (5-9 DU/Ac)
- Urban Medium Residential (10-18 DU/Ac)
- Urban High Residential (19-30 DU/Ac)
- Manchester Community Plan**
  - Manchester Village Commercial
  - Manchester Village Low Residential
  - Manchester Village Residential
- Park
- Incorporated City
- Military
- Urban Growth Area Boundary
- Incorporated City Boundary
- Limited Area of More Intense Rural Development - Type I
- Limited Area of More Intense Rural Development - Type III
- Commissioner District 2
- State Highway
- Arterial
- Collector
- Railroad Lines
- Tax Parcels
- Lake, Pond or Reservoir

MASON COUNTY



PIERCE COUNTY

Kitsap County Department of Community Development  
614 Division Street, MS-36, Port Orchard, Washington 98366  
VOICE (360) 337-7181 \* FAX (360) 337-4925



Colvos Passage

KITSAP COUNTY COMPREHENSIVE PLANNING MAP SERIES  
This map represents the Zoning Map adopted with Kitsap County's Comprehensive Plan as approved by the Kitsap County Board of Commissioners on May 7, 1998.  
This map is effective as of June 30, 2016 superseding previous zoning maps.  
The zone designations are defined in the text of Kitsap County Ordinance No. 216-1998 (Zoning Ordinance) which is available from the Department of Community Development.  
NOTE:  
This map was developed for general land use planning purposes. The user of this map must assume responsibility for determining its suitability for other purposes.  
Amendments:  
February 8, 1999 Forest Resource Lands  
April 19, 1999 Suburban Rural Village  
May 10, 1999 Modified Joint Planning Areas  
July 31, 1999 Port Gamble Rural Historic Town  
June 10, 2002 Manchester Community Plan  
June 10, 2002 Ord No. 274-2002 Comprehensive Plan/Zoning Amendments  
September 8, 2003 Res No. 169-2003 (Map Corrections)  
December 8, 2003 Ord No. 311-2003 Comprehensive Plan/Zoning Amendments  
October 25, 2004 George's Corner Commercial LAMIRD  
October 25, 2004 Ord No. 326-2004 Comprehensive Plan/Zoning Amendments  
December 22, 2005 Ord No. 352-2005 Comprehensive Plan/Zoning Amendments  
December 11, 2006 Ord No. 370-2006 10 Year Update  
June 11, 2007 Ord No. 384-2007 Repeat of Urban Holding Zone (UHA)  
November 19, 2007 Ord No. 402-2007 Keyport Community Plan  
December 31, 2007 Ord No. 405-2007 Comprehensive Plan/Zoning Amendments  
October 13, 2008 Ord No. 414-2008 Comprehensive Plan/Zoning Amendments  
December 23, 2008 Ord No. 420-2008 Comprehensive Plan/Zoning Amendments  
December 14, 2009 Ord No. 443-2009 Comprehensive Plan/Zoning Amendments  
December 15, 2010 Ord No. 467-2010 Comprehensive Plan/Zoning Amendments  
December 15, 2010 Ord No. 467-2010 Type III LAMIRDS  
August 31, 2012 Ord No. 493-2012 Urban Growth Area - Remainder  
December 13, 2012 Ord No. 498-2012 Comprehensive Plan/Zoning Amendments  
January 15, 2014 Ord No. 511-2013 Gorst Watershed Plan  
June 30, 2016 Ord No. 534-2016 Comprehensive Plan/Zoning Update  
Map Date: June 2016