

KITSAP COUNTY

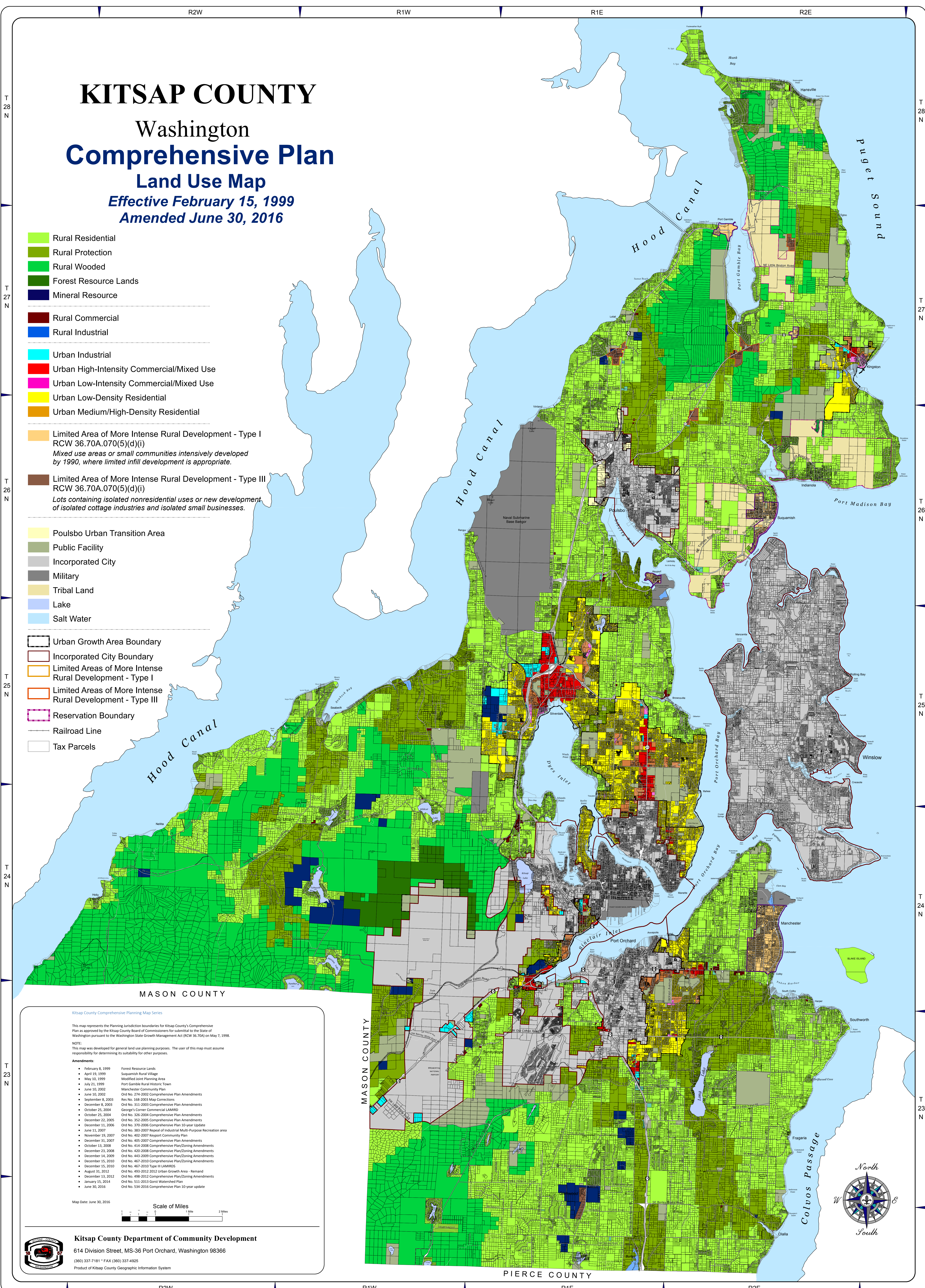
Washington

Comprehensive Plan

Land Use Map

Effective February 15, 1999
Amended June 30, 2016

- Rural Residential
 - Rural Protection
 - Rural Wooded
 - Forest Resource Lands
 - Mineral Resource
-
- Rural Commercial
 - Rural Industrial
-
- Urban Industrial
 - Urban High-Intensity Commercial/Mixed Use
 - Urban Low-Intensity Commercial/Mixed Use
 - Urban Low-Density Residential
 - Urban Medium/High-Density Residential
-
- Limited Area of More Intense Rural Development - Type I
RCW 36.70A.070(5)(d)(i)
Mixed use areas or small communities intensively developed by 1990, where limited infill development is appropriate.
 - Limited Area of More Intense Rural Development - Type III
RCW 36.70A.070(5)(d)(i)
Lots containing isolated nonresidential uses or new development of isolated cottage industries and isolated small businesses.
-
- Poulsbo Urban Transition Area
 - Public Facility
 - Incorporated City
 - Military
 - Tribal Land
 - Lake
 - Salt Water
-
- Urban Growth Area Boundary
 - Incorporated City Boundary
 - Limited Areas of More Intense Rural Development - Type I
 - Limited Areas of More Intense Rural Development - Type III
 - Reservation Boundary
 - Railroad Line
 - Tax Parcels



Kitsap County Comprehensive Planning Map Series

This map represents the Planning Jurisdiction boundaries for Kitsap County's Comprehensive Plan as approved by the Kitsap County Board of Commissioners for submission to the State of Washington pursuant to the Washington State Growth Management Act (RCW 36.70A) on May 7, 1998.

NOTE:
This map was developed for general land use planning purposes. The user of this map must assume responsibility for determining its suitability for other purposes.

Amendments:

- February 8, 1999 Forest Resource Lands
- April 19, 1999 Suquamish Rural Village
- May 15, 1999 Modified Joint Planning Area
- July 21, 1999 Port Gamble Rural Historic Town
- June 10, 2002 Manchester Community Plan
- June 10, 2002 Ord. No. 274-2002 Comprehensive Plan Amendments
- September 8, 2003 Res. No. 168-2003 Map Corrections
- December 8, 2003 Ord. No. 311-2003 Comprehensive Plan Amendments
- October 25, 2004 George's Corner Commercial LAMRD
- October 25, 2004 Ord. No. 326-2004 Comprehensive Plan Amendments
- December 22, 2005 Ord. No. 352-2005 Comprehensive Plan Amendments
- December 31, 2006 Ord. No. 370-2006 Comprehensive Plan 10-year Update
- June 11, 2007 Ord. No. 383-2007 Repeal of Industrial Multi-Purpose Recreation Area
- November 19, 2007 Ord. No. 402-2007 Keyport Community Plan
- December 31, 2007 Ord. No. 405-2007 Comprehensive Plan Amendments
- October 11, 2008 Ord. No. 414-2008 Comprehensive Plan/Zoning Amendments
- December 21, 2008 Ord. No. 420-2008 Comprehensive Plan/Zoning Amendments
- December 14, 2009 Ord. No. 443-2009 Comprehensive Plan/Zoning Amendments
- December 15, 2010 Ord. No. 467-2010 Comprehensive Plan/Zoning Amendments
- December 15, 2010 Ord. No. 467-2010 Type III LAMRDs
- August 31, 2012 Ord. No. 493-2012 2012 Urban Growth Area - Remainder
- December 18, 2012 Ord. No. 498-2012 Comprehensive Plan/Zoning Amendments
- January 15, 2014 Ord. No. 511-2013 Gorge Watershed Plan
- June 30, 2016 Ord. No. 534-2016 Comprehensive Plan 10-year update

Map Date: June 30, 2016

Scale of Miles
0 1 2 Miles

Kitsap County Department of Community Development
614 Division Street, MS-36 Port Orchard, Washington 98366
(360) 337-7181 • FAX (360) 337-4925
Product of Kitsap County Geographic Information System



MASON COUNTY

MASON COUNTY

PIERCE COUNTY