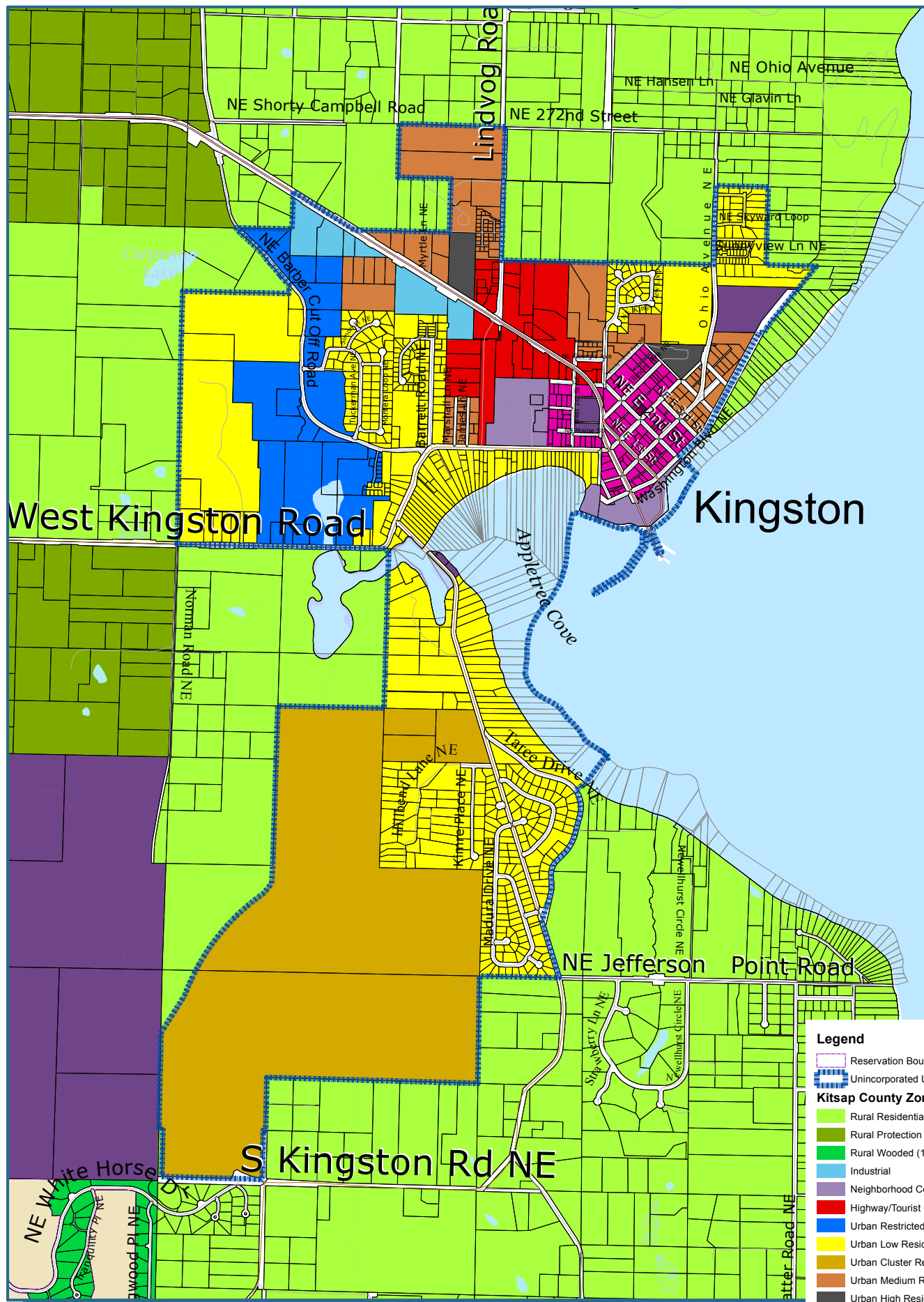
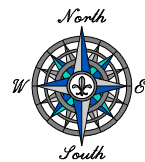


Appendix C: Zoning Maps

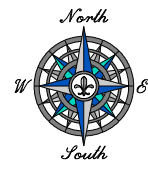


Kingston Urban Growth Area No Action Alternative

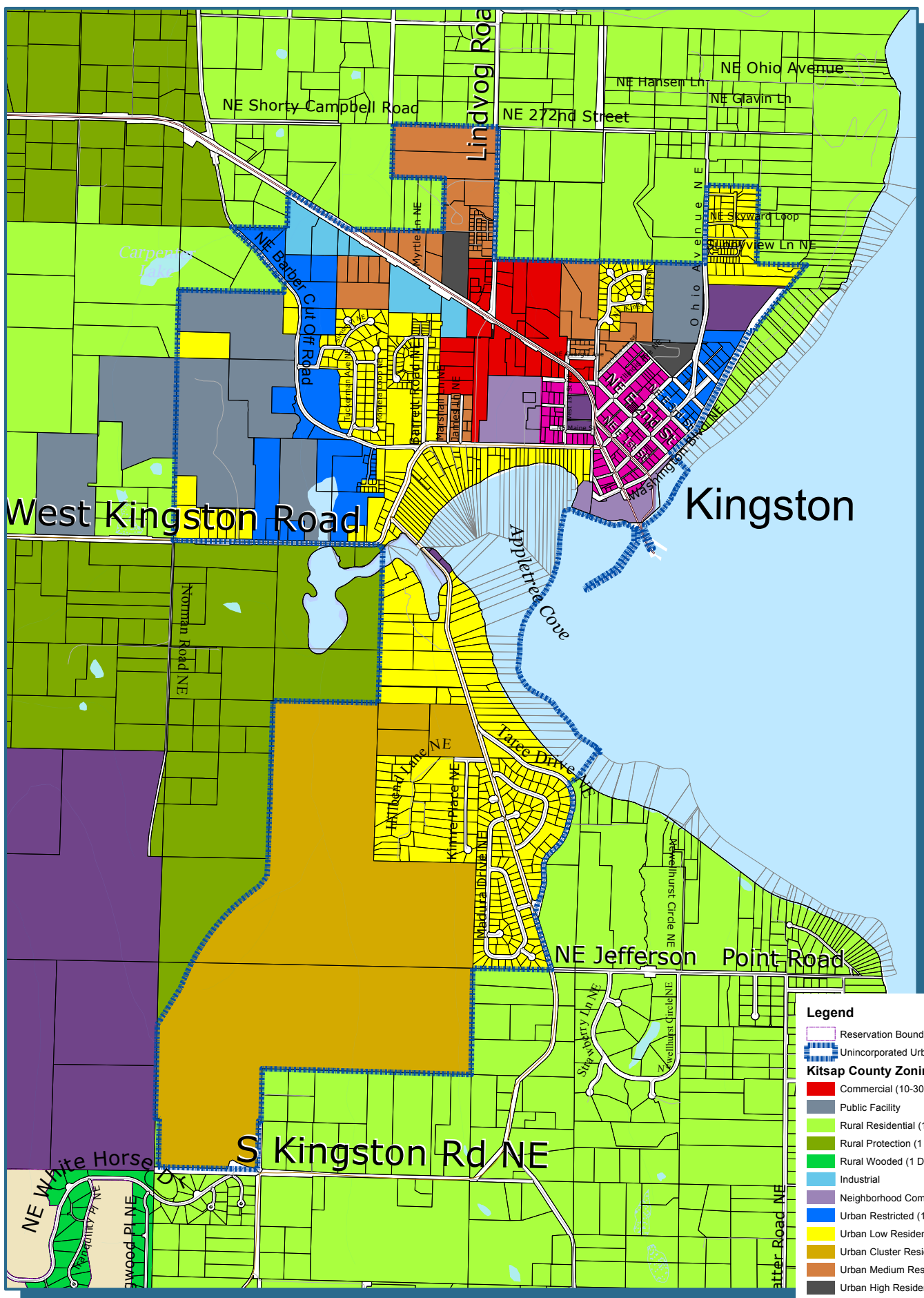
Legend

- Reservation Boundaries
- Unincorporated Urban Growth Area
- Kitsap County Zoning Designations**
- Rural Residential (1 DU/5 Ac)
- Rural Protection (1 DU/10 Ac)
- Rural Wooded (1 DU/20 Ac)
- Industrial
- Neighborhood Commercial (10-30 DU/Ac)
- Highway/Tourist Commercial (10-30 DU/Ac)
- Urban Restricted (1-5 DU/Ac)
- Urban Low Residential (5-9 DU/Ac)
- Urban Cluster Residential (5-9 DU/Ac)
- Urban Medium Residential (10-18 DU/Ac)
- Urban High Residential (19-30 DU/Ac)
- Urban Village Center (up to 18 DU/Ac)
- Park (Kitsap County)
- Tribal Land
- Salt Water





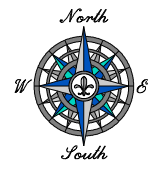
Kingston Urban Growth Area Alternative 2



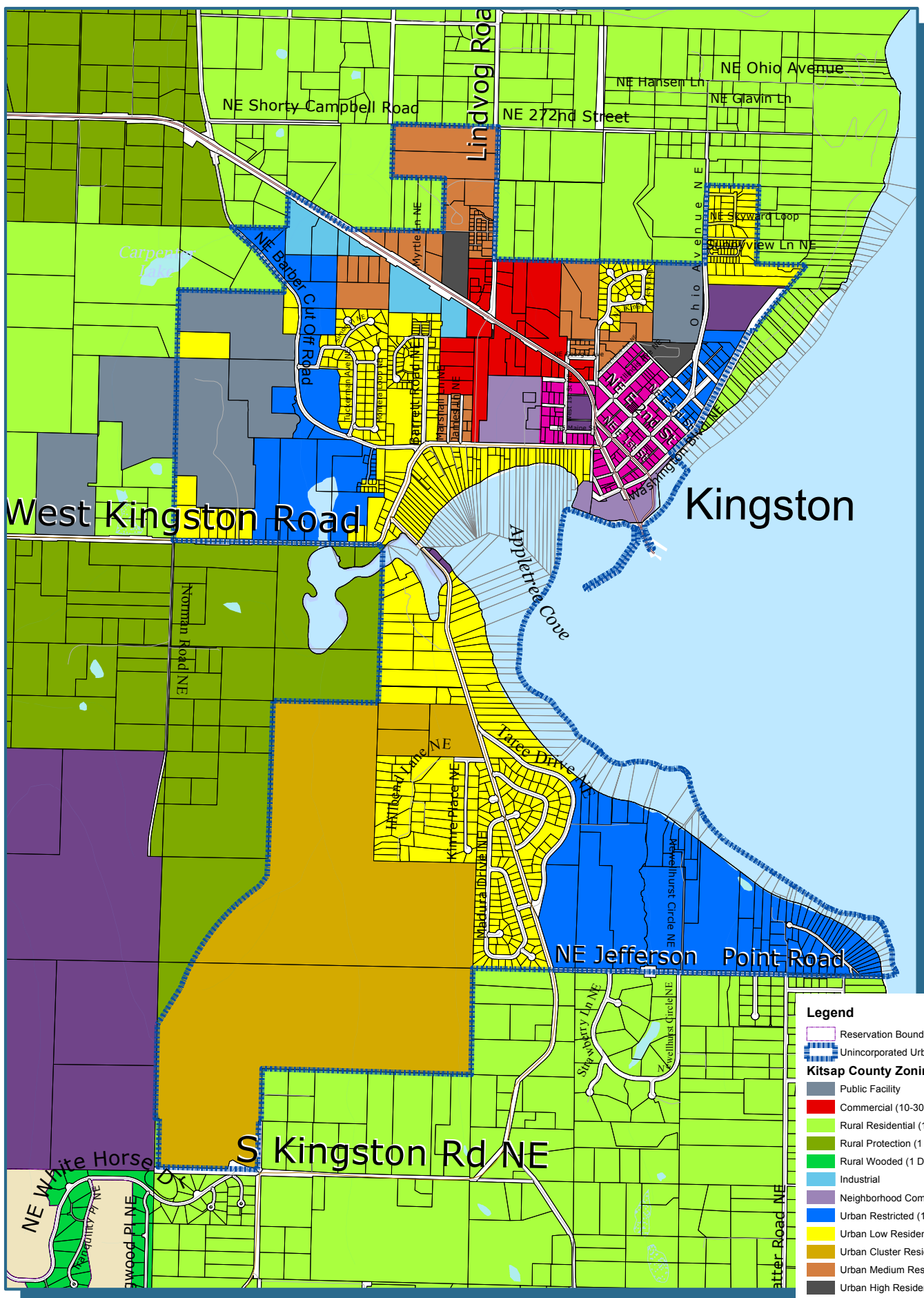
- Legend**
- Reservation Boundaries
 - Unincorporated Urban Growth Area
 - Kitsap County Zoning Designations**
 - Commercial (10-30 DU/Ac)
 - Public Facility
 - Rural Residential (1 DU/5 Ac)
 - Rural Protection (1 DU/10 Ac)
 - Rural Wooded (1 DU/20 Ac)
 - Industrial
 - Neighborhood Commercial (10-30 DU/Ac)
 - Urban Restricted (1-5 DU/Ac)
 - Urban Low Residential (5-9 DU/Ac)
 - Urban Cluster Residential (5-9 DU/Ac)
 - Urban Medium Residential (10-18 DU/Ac)
 - Urban High Residential (19-30 DU/Ac)
 - Urban Village Center (up to 18 DU/Ac)
 - Park (Kitsap County)
 - Tribal Land
 - Salt Water



Kitsap County Department of Community Development
 614 Division Street, MS-36, Port Orchard, Washington 98366
 VOICE (360) 337-5777 * FAX (360) 337-4925



Kingston Urban Growth Area Alternative 3



Legend

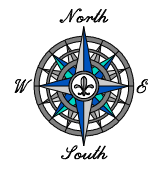
- Reservation Boundaries
- Unincorporated Urban Growth Area

Kitsap County Zoning Designations

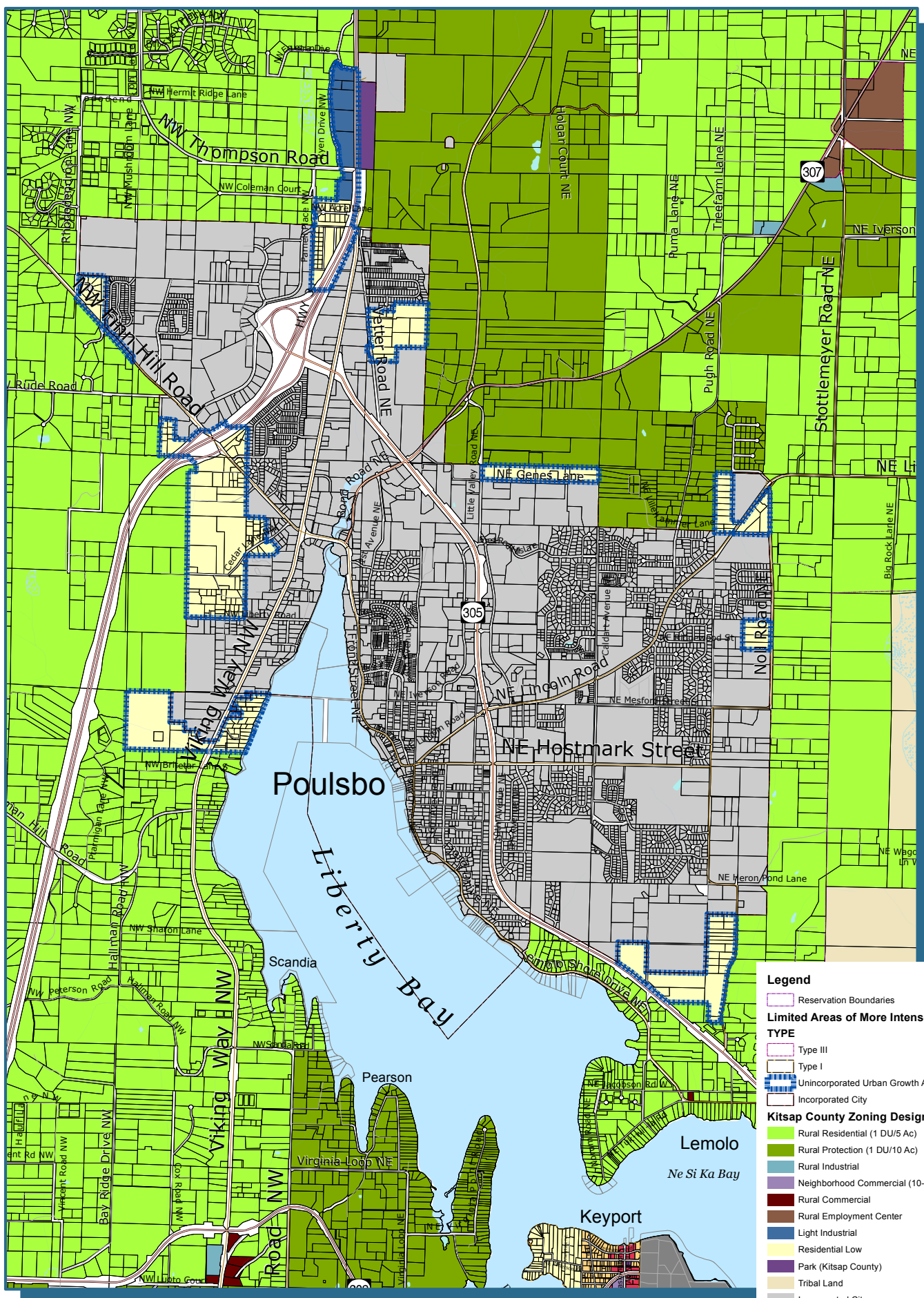
- Public Facility
- Commercial (10-30 DU/Ac)
- Rural Residential (1 DU/5 Ac)
- Rural Protection (1 DU/10 Ac)
- Rural Wooded (1 DU/20 Ac)
- Industrial
- Neighborhood Commercial (10-30 DU/Ac)
- Urban Restricted (1-5 DU/Ac)
- Urban Low Residential (5-9 DU/Ac)
- Urban Cluster Residential (5-9 DU/Ac)
- Urban Medium Residential (10-18 DU/Ac)
- Urban High Residential (19-30 DU/Ac)
- Urban Village Center (up to 18 DU/Ac)
- Park (Kitsap County)
- Tribal Land
- Salt Water



Kitsap County Department of Community Development
 614 Division Street, MS-36, Port Orchard, Washington 98366
 VOICE (360) 337-5777 * FAX (360) 337-4925



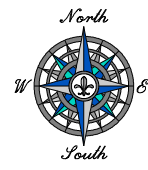
Poulsbo Urban Transition Area No Action Alternative



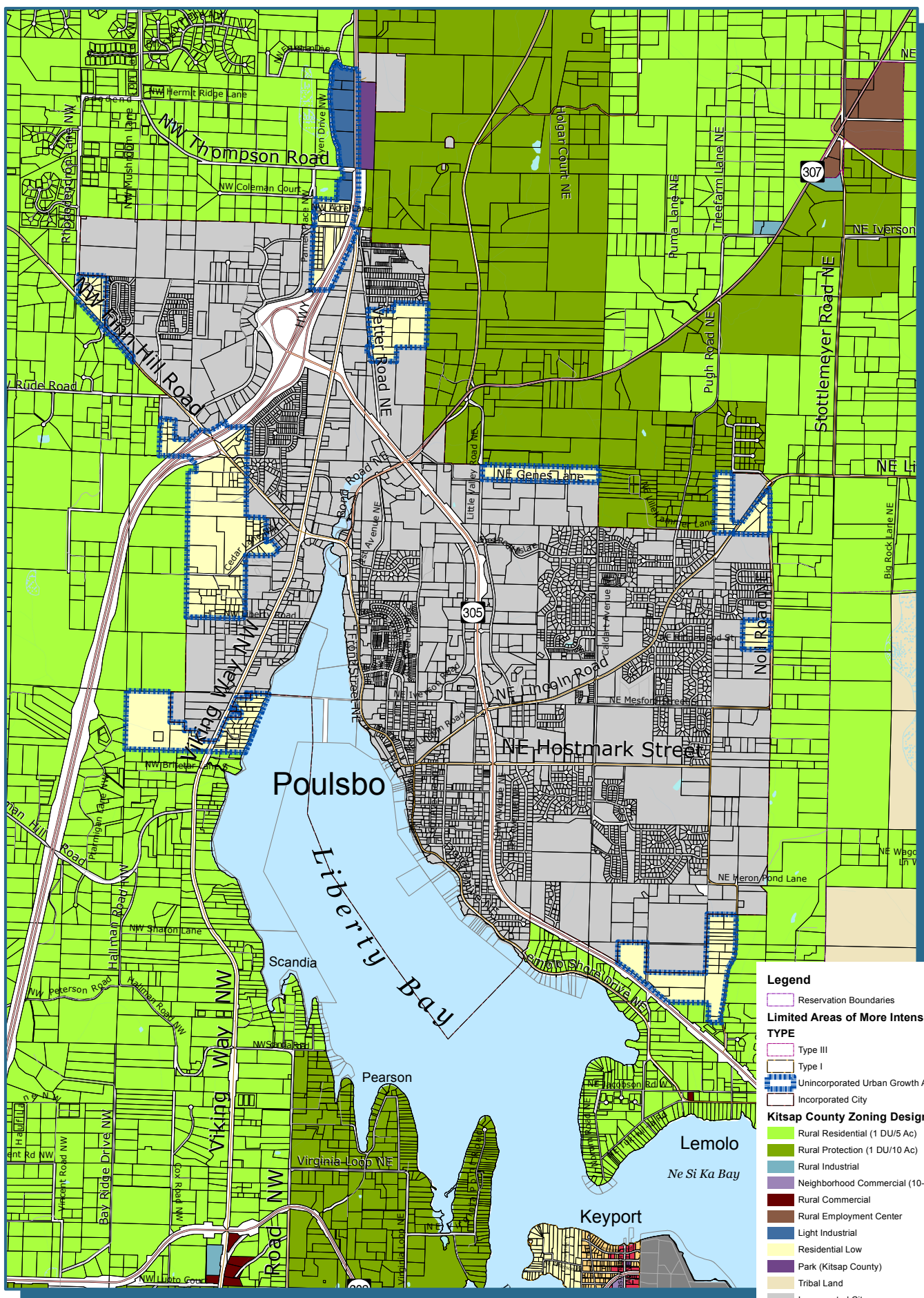
- Legend**
- Reservation Boundaries
 - Limited Areas of More Intense Rural Development**
 - TYPE**
 - Type III
 - Type I
 - Unincorporated Urban Growth Area
 - Incorporated City
 - Kitsap County Zoning Designations**
 - Rural Residential (1 DU/5 Ac)
 - Rural Protection (1 DU/10 Ac)
 - Rural Industrial
 - Neighborhood Commercial (10-30 DU/Ac)
 - Rural Commercial
 - Rural Employment Center
 - Light Industrial
 - Residential Low
 - Park (Kitsap County)
 - Tribal Land
 - Incorporated City
 - Military
 - Keyport Village Commercial
 - Keyport Village Low Residential
 - Keyport Village Residential



Kitsap County Department of Community Development
 614 Division Street, MS-36, Port Orchard, Washington 98366
 VOICE (360) 337-5777 * FAX (360) 337-4925



Poulsbo Urban Transition Area Alternative 2



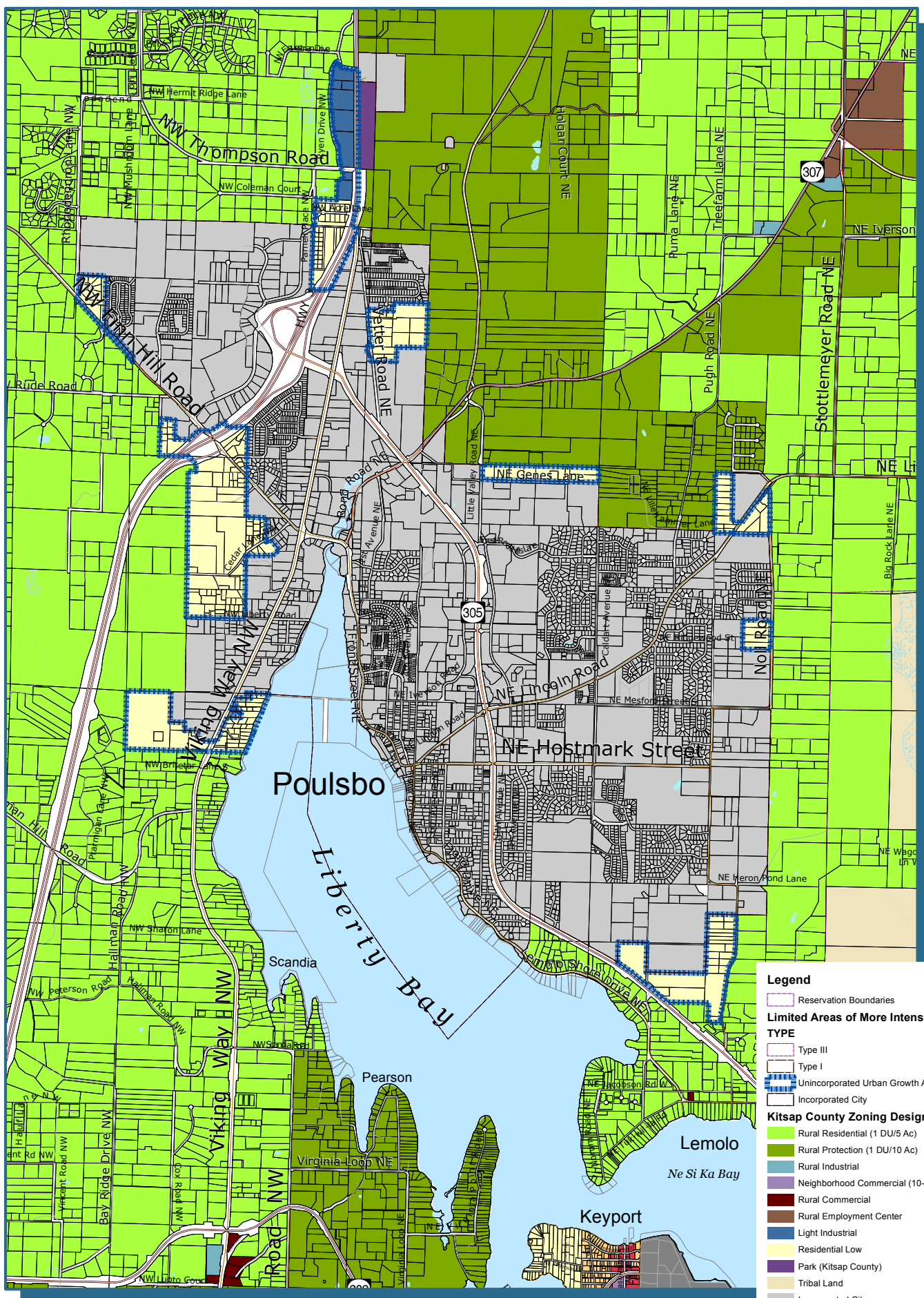
- Legend**
- Reservation Boundaries
 - Limited Areas of More Intense Rural Development**
 - TYPE**
 - Type III
 - Type I
 - Unincorporated Urban Growth Area
 - Incorporated City
 - Kitsap County Zoning Designations**
 - Rural Residential (1 DU/5 Ac)
 - Rural Protection (1 DU/10 Ac)
 - Rural Industrial
 - Neighborhood Commercial (10-30 DU/Ac)
 - Rural Commercial
 - Rural Employment Center
 - Light Industrial
 - Residential Low
 - Park (Kitsap County)
 - Tribal Land
 - Incorporated City
 - Military
 - Keyport Village Commercial
 - Keyport Village Low Residential
 - Keyport Village Residential



Kitsap County Department of Community Development
 614 Division Street, MS-36, Port Orchard, Washington 98366
 VOICE (360) 337-5777 * FAX (360) 337-4925



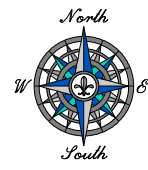
Poulsbo Urban Transition Area Alternative 3



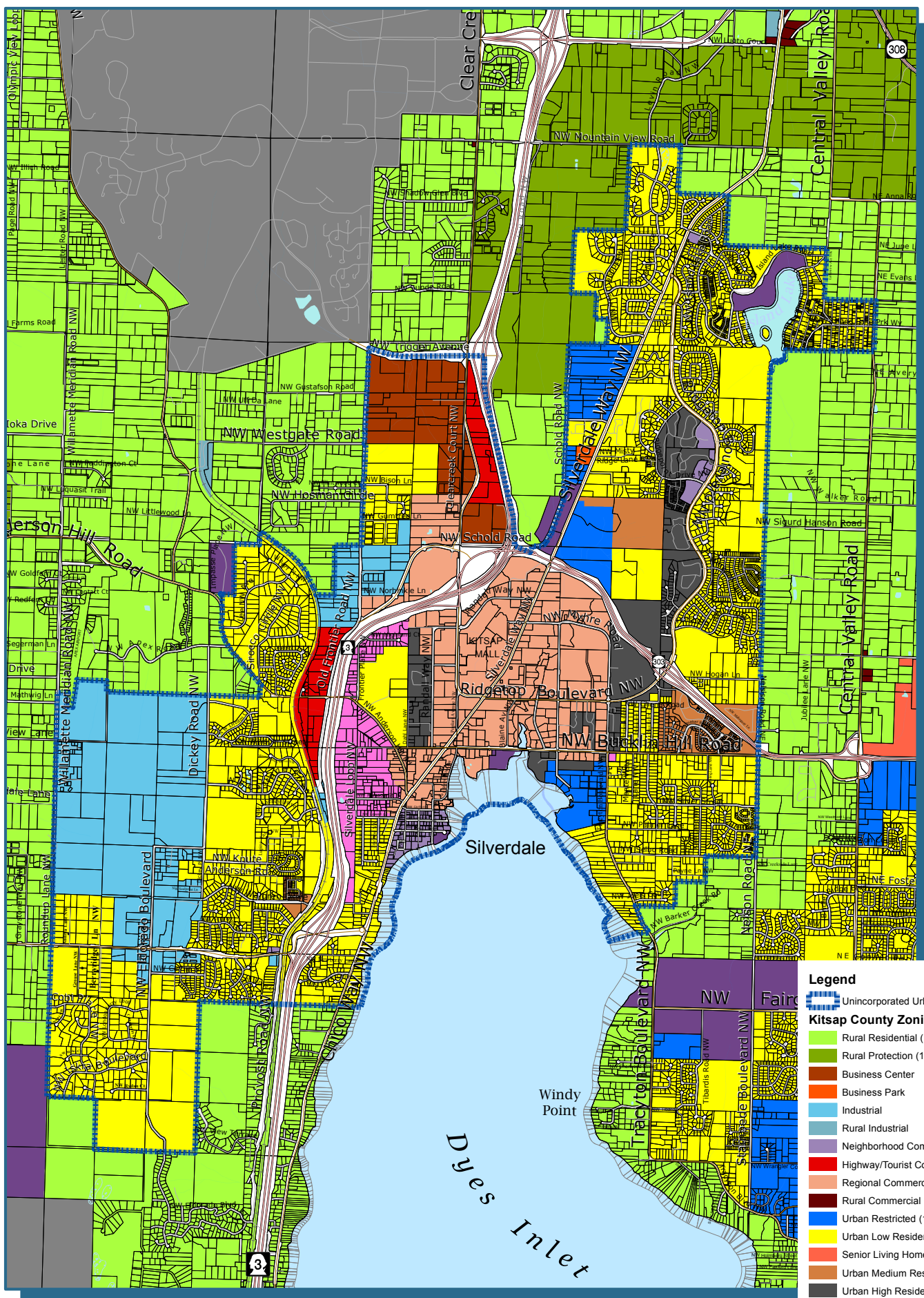
- Legend**
- Reservation Boundaries
 - Limited Areas of More Intense Rural Development**
 - TYPE**
 - Type III
 - Type I
 - Unincorporated Urban Growth Area
 - Incorporated City
 - Kitsap County Zoning Designations**
 - Rural Residential (1 DU/5 Ac)
 - Rural Protection (1 DU/10 Ac)
 - Rural Industrial
 - Neighborhood Commercial (10-30 DU/Ac)
 - Rural Commercial
 - Rural Employment Center
 - Light Industrial
 - Residential Low
 - Park (Kitsap County)
 - Tribal Land
 - Incorporated City
 - Military
 - Keyport Village Commercial
 - Keyport Village Low Residential
 - Keyport Village Residential



Kitsap County Department of Community Development
 614 Division Street, MS-36, Port Orchard, Washington 98366
 VOICE (360) 337-5777 * FAX (360) 337-4925



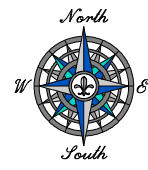
Silverdale Urban Growth Area No Action Alternative



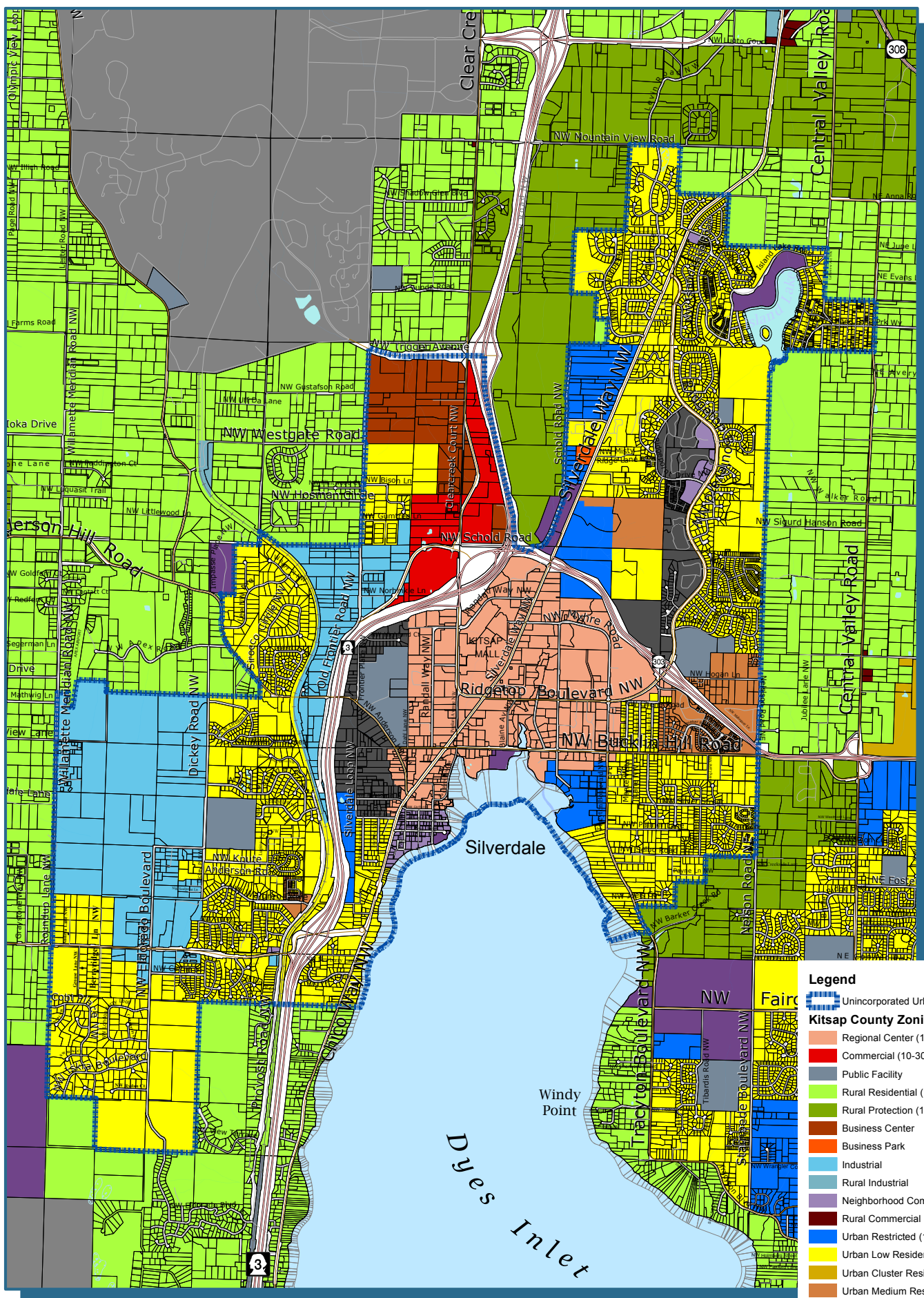
- Legend**
- Unincorporated Urban Growth Area
 - Kitsap County Zoning Designations**
 - Rural Residential (1 DU/5 Ac)
 - Rural Protection (1 DU/10 Ac)
 - Business Center
 - Business Park
 - Industrial
 - Rural Industrial
 - Neighborhood Commercial (10-30 DU/Ac)
 - Highway/Tourist Commercial (10-30 DU/Ac)
 - Regional Commercial (10-30 DU/Ac)
 - Rural Commercial
 - Urban Restricted (1-5 DU/Ac)
 - Urban Low Residential (5-9 DU/Ac)
 - Senior Living Homestead (5-9 DU/Ac)
 - Urban Medium Residential (10-18 DU/Ac)
 - Urban High Residential (19-30 DU/Ac)
 - Mixed Use (10-30 DU/Ac)
 - Park (Kitsap County)
 - Military
 - Lake



Kitsap County Department of Community Development
 614 Division Street, MS-36, Port Orchard, Washington 98366
 VOICE (360) 337-5777 * FAX (360) 337-4925



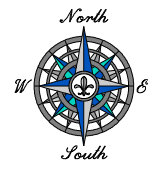
Silverdale Urban Growth Area Alternative 2



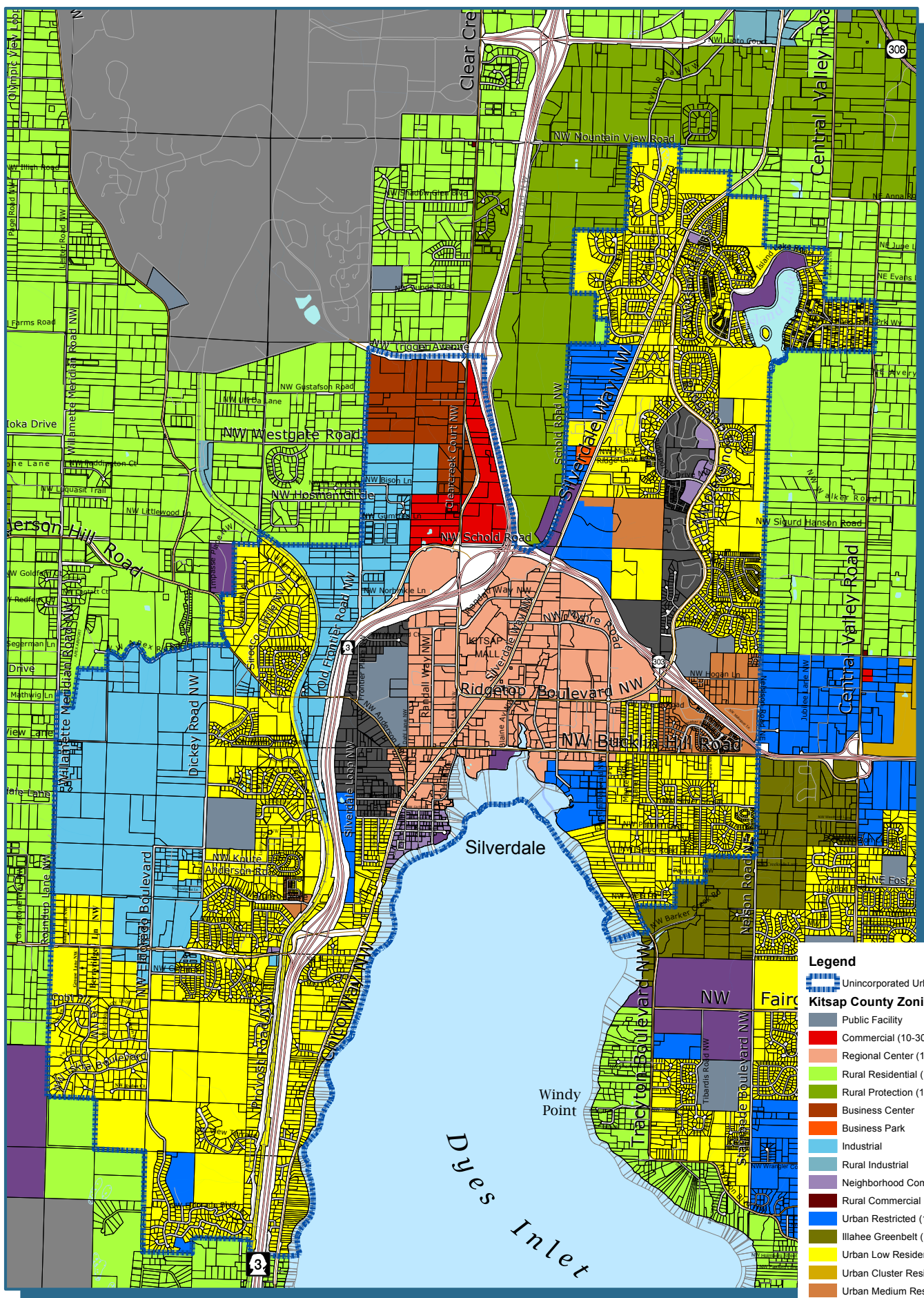
- Legend**
- Unincorporated Urban Growth Area
 - Kitsap County Zoning Designations**
 - Regional Center (10-30 DU/Ac)
 - Commercial (10-30 DU/Ac)
 - Public Facility
 - Rural Residential (1 DU/5 Ac)
 - Rural Protection (1 DU/10 Ac)
 - Business Center
 - Business Park
 - Industrial
 - Rural Industrial
 - Neighborhood Commercial (10-30 DU/Ac)
 - Rural Commercial
 - Urban Restricted (1-5 DU/Ac)
 - Urban Low Residential (5-9 DU/Ac)
 - Urban Cluster Residential (5-9 DU/Ac)
 - Urban Medium Residential (10-18 DU/Ac)
 - Urban High Residential (19-30 DU/Ac)
 - Park (Kitsap County)
 - Military
 - Lake



Kitsap County Department of Community Development
 614 Division Street, MS-36, Port Orchard, Washington 98366
 VOICE (360) 337-5777 * FAX (360) 337-4925



Silverdale Urban Growth Area Alternative 3

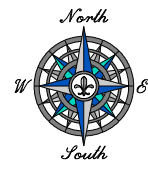


Legend

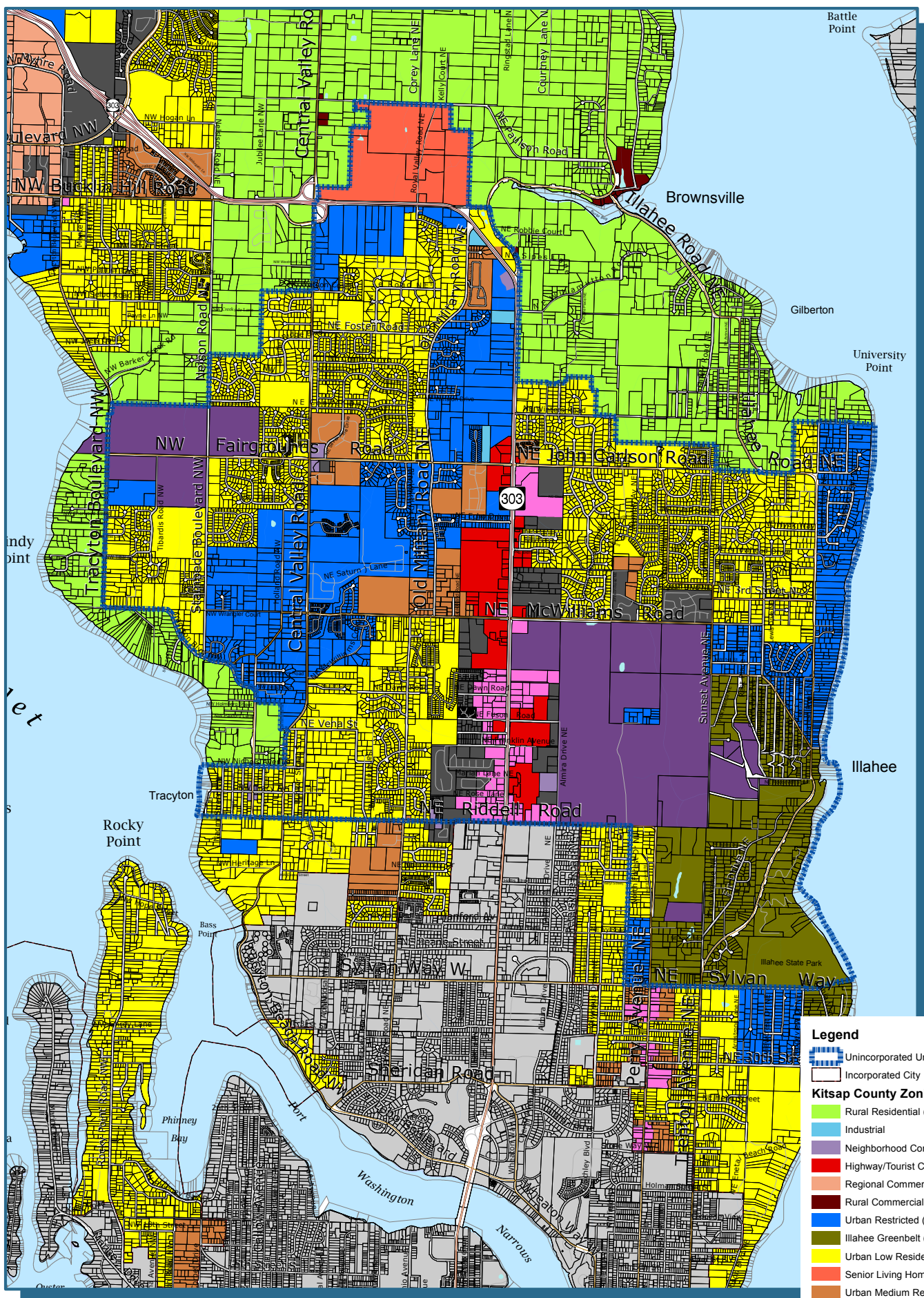
- Unincorporated Urban Growth Area
- Kitsap County Zoning Designations**
- Public Facility
- Commercial (10-30 DU/Ac)
- Regional Center (10-30 DU/Ac)
- Rural Residential (1 DU/5 Ac)
- Rural Protection (1 DU/10 Ac)
- Business Center
- Business Park
- Industrial
- Rural Industrial
- Neighborhood Commercial (10-30 DU/Ac)
- Rural Commercial
- Urban Restricted (1-5 DU/Ac)
- Illahee Greenbelt (1-4 DU/Ac)
- Urban Low Residential (5-9 DU/Ac)
- Urban Cluster Residential (5-9 DU/Ac)
- Urban Medium Residential (10-18 DU/Ac)
- Urban High Residential (19-30 DU/Ac)
- Park (Kitsap County)
- Military
- Lake



Kitsap County Department of Community Development
 614 Division Street, MS-36, Port Orchard, Washington 98366
 VOICE (360) 337-5777 * FAX (360) 337-4925



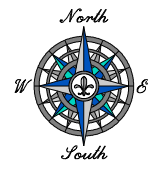
Central Kitsap Urban Growth Area No Action Alternative



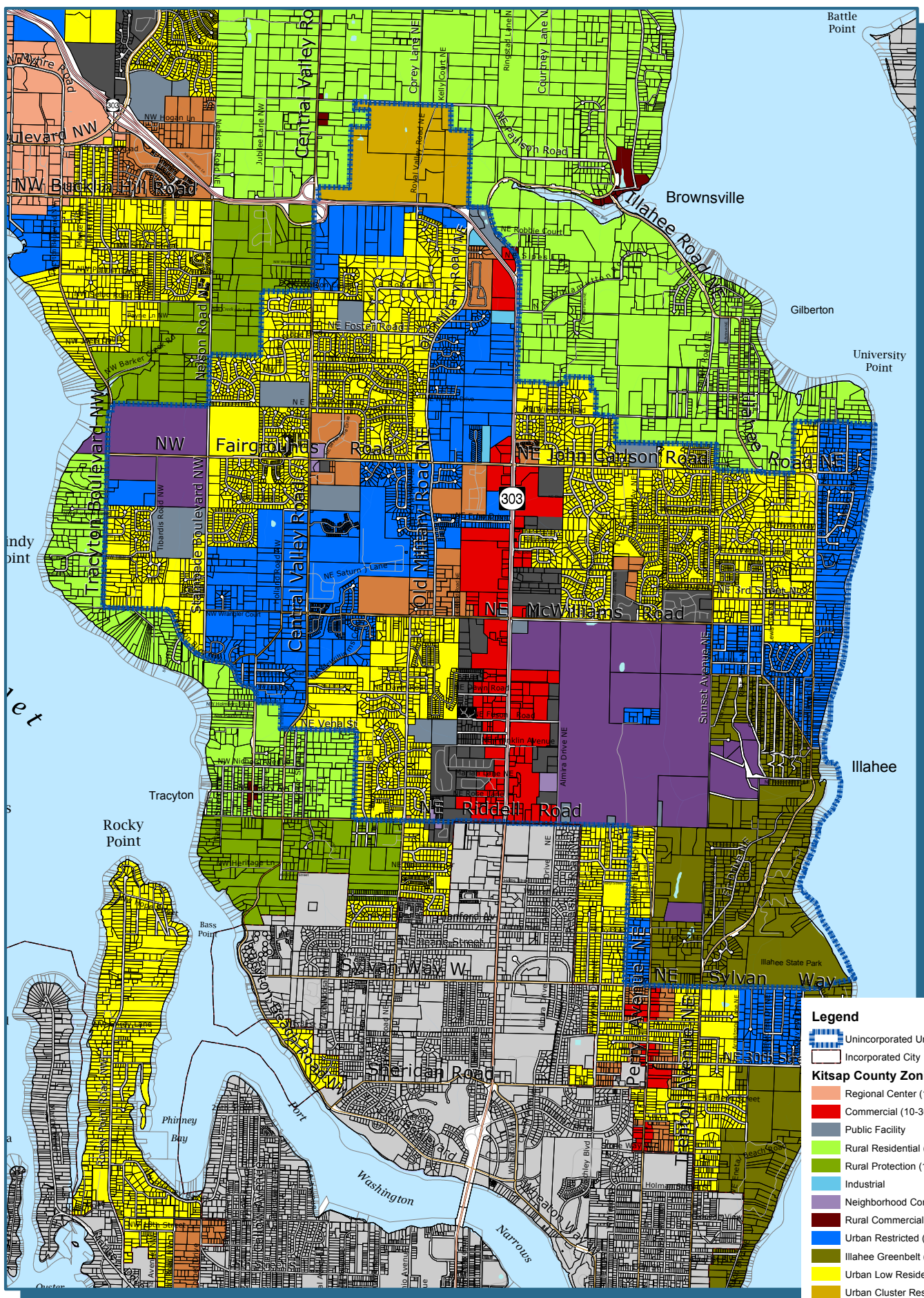
- Legend**
- Unincorporated Urban Growth Area
 - Incorporated City
- Kitsap County Zoning Designations**
- Rural Residential (1 DU/5 Ac)
 - Industrial
 - Neighborhood Commercial (10-30 DU/Ac)
 - Highway/Tourist Commercial (10-30 DU/Ac)
 - Regional Commercial (10-30 DU/Ac)
 - Rural Commercial
 - Urban Restricted (1-5 DU/Ac)
 - Illehee Greenbelt (1-4 DU/Ac)
 - Urban Low Residential (5-9 DU/Ac)
 - Senior Living Homestead (5-9 DU/Ac)
 - Urban Medium Residential (10-18 DU/Ac)
 - Urban High Residential (19-30 DU/Ac)
 - Mixed Use (10-30 DU/Ac)
 - Park (Kitsap County)
 - Incorporated City



Kitsap County Department of Community Development
 614 Division Street, MS-36, Port Orchard, Washington 98366
 VOICE (360) 337-5777 * FAX (360) 337-4925



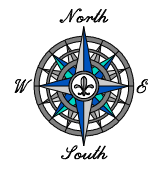
Central Kitsap Urban Growth Area Alternative 2



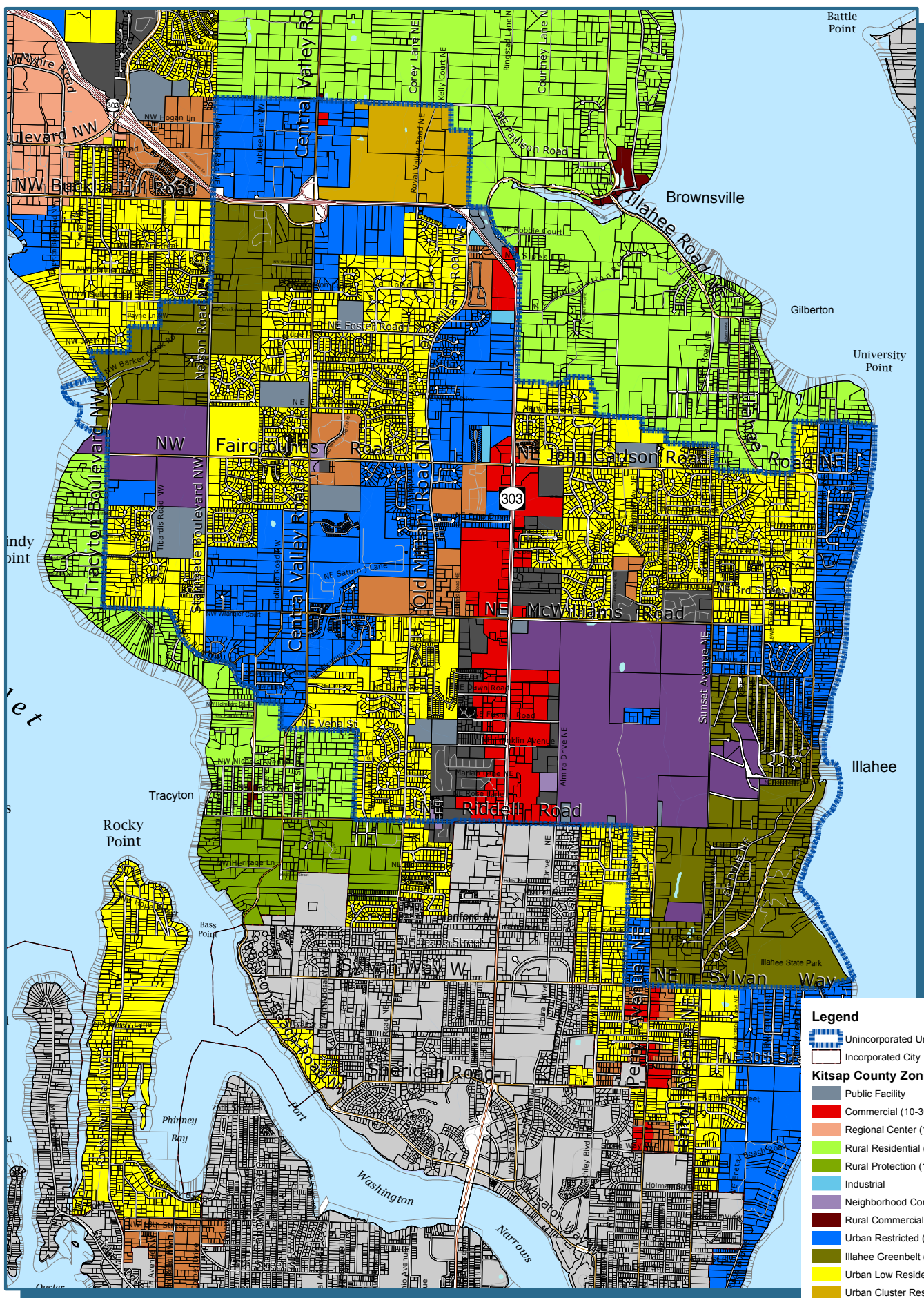
- Legend**
- Unincorporated Urban Growth Area
 - Incorporated City
 - Kitsap County Zoning Designations**
 - Regional Center (10-30 DU/Ac)
 - Commercial (10-30 DU/Ac)
 - Public Facility
 - Rural Residential (1 DU/5 Ac)
 - Rural Protection (1 DU/10 Ac)
 - Industrial
 - Neighborhood Commercial (10-30 DU/Ac)
 - Rural Commercial
 - Urban Restricted (1-5 DU/Ac)
 - Ilhahee Greenbelt (1-4 DU/Ac)
 - Urban Low Residential (5-9 DU/Ac)
 - Urban Cluster Residential (5-9 DU/Ac)
 - Urban Medium Residential (10-18 DU/Ac)
 - Urban High Residential (19-30 DU/Ac)
 - Park (Kitsap County)
 - Incorporated City



Kitsap County Department of Community Development
 614 Division Street, MS-36, Port Orchard, Washington 98366
 VOICE (360) 337-5777 * FAX (360) 337-4925



Central Kitsap Urban Growth Area Alternative 3



Legend

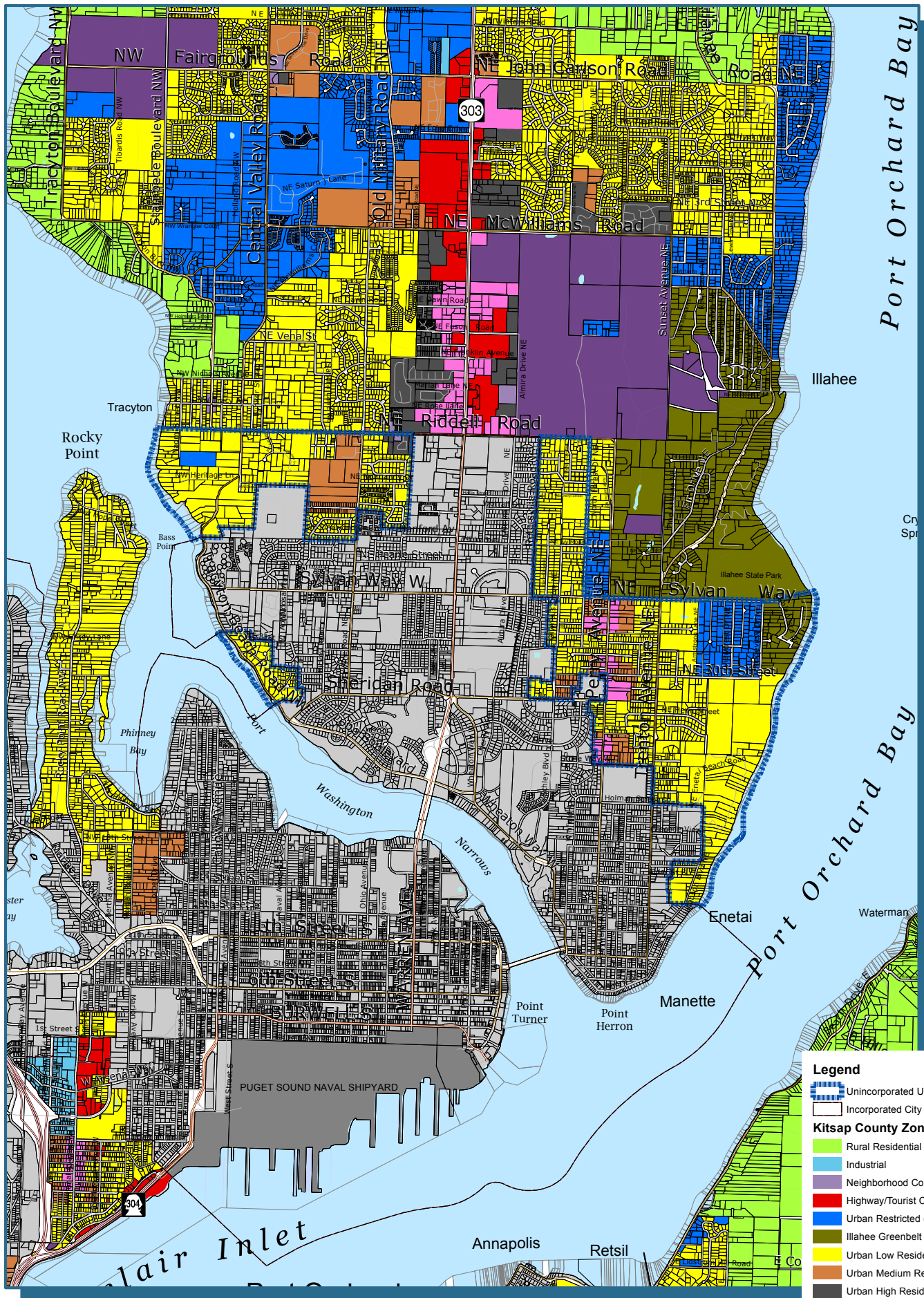
- Unincorporated Urban Growth Area
- Incorporated City

Kitsap County Zoning Designations

- Public Facility
- Commercial (10-30 DU/Ac)
- Regional Center (10-30 DU/Ac)
- Rural Residential (1 DU/5 Ac)
- Rural Protection (1 DU/10 Ac)
- Industrial
- Neighborhood Commercial (10-30 DU/Ac)
- Rural Commercial
- Urban Restricted (1-5 DU/Ac)
- Illehee Greenbelt (1-4 DU/Ac)
- Urban Low Residential (5-9 DU/Ac)
- Urban Cluster Residential (5-9 DU/Ac)
- Urban Medium Residential (10-18 DU/Ac)
- Urban High Residential (19-30 DU/Ac)
- Park (Kitsap County)
- Incorporated City



Kitsap County Department of Community Development
 614 Division Street, MS-36, Port Orchard, Washington 98366
 VOICE (360) 337-5777 * FAX (360) 337-4925

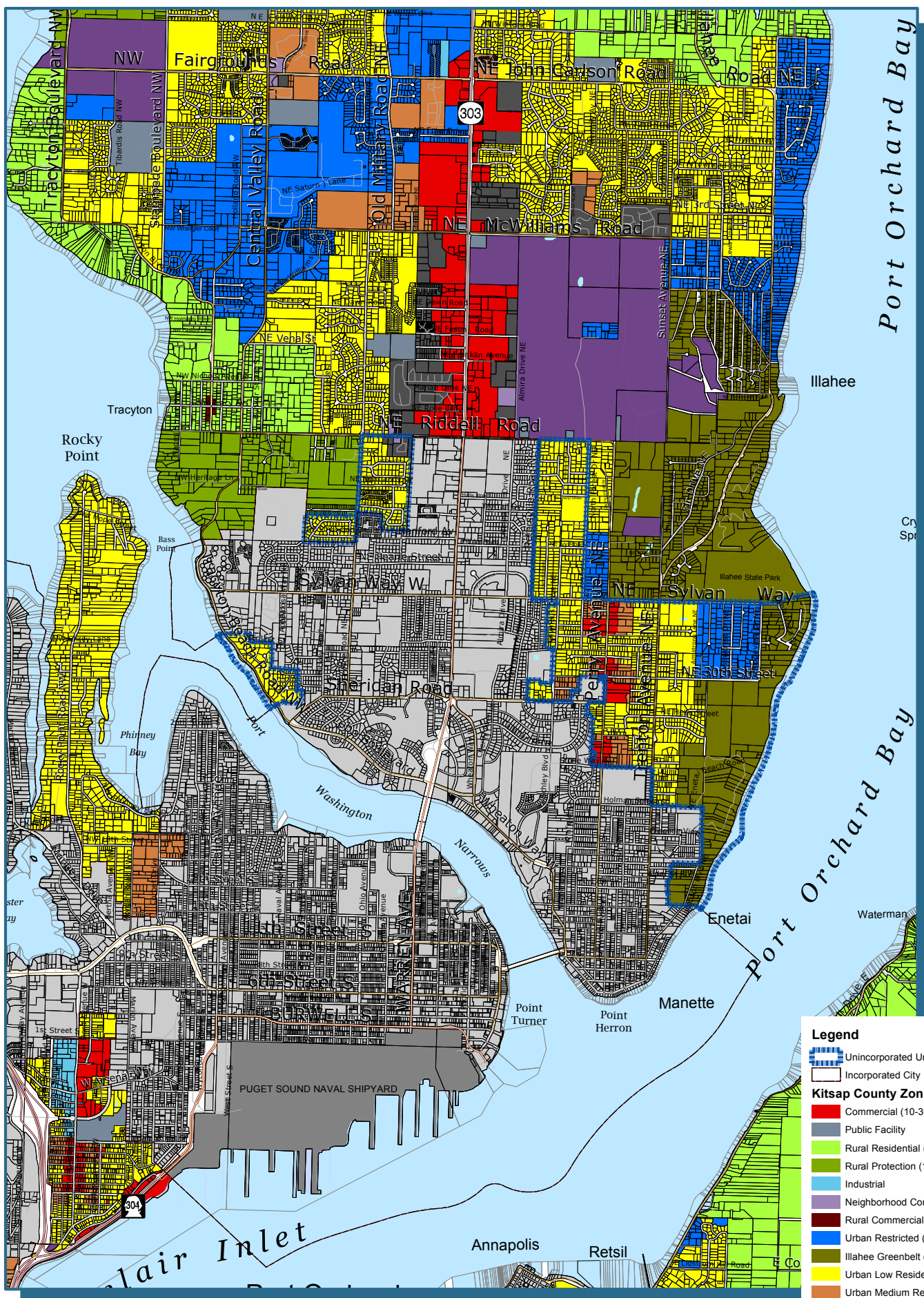


Bremerton East Urban Growth Area No Action Alternative

- Legend**
- Unincorporated Urban Growth Area
 - Incorporated City
 - Kitsap County Zoning Designations**
 - Rural Residential (1 DU/5 Ac)
 - Industrial
 - Neighborhood Commercial (10-30 DU/Ac)
 - Highway/Tourist Commercial (10-30 DU/Ac)
 - Urban Restricted (1-5 DU/Ac)
 - Ilahee Greenbelt (1-4 DU/Ac)
 - Urban Low Residential (5-9 DU/Ac)
 - Urban Medium Residential (10-18 DU/Ac)
 - Urban High Residential (19-30 DU/Ac)
 - Mixed Use (10-30 DU/Ac)
 - Park (Kitsap County)
 - Incorporated City
 - Military



Kitsap County Department of Community Development
 614 Division Street, MS-36, Port Orchard, Washington 98366
 VOICE (360) 337-5777 * FAX (360) 337-4925



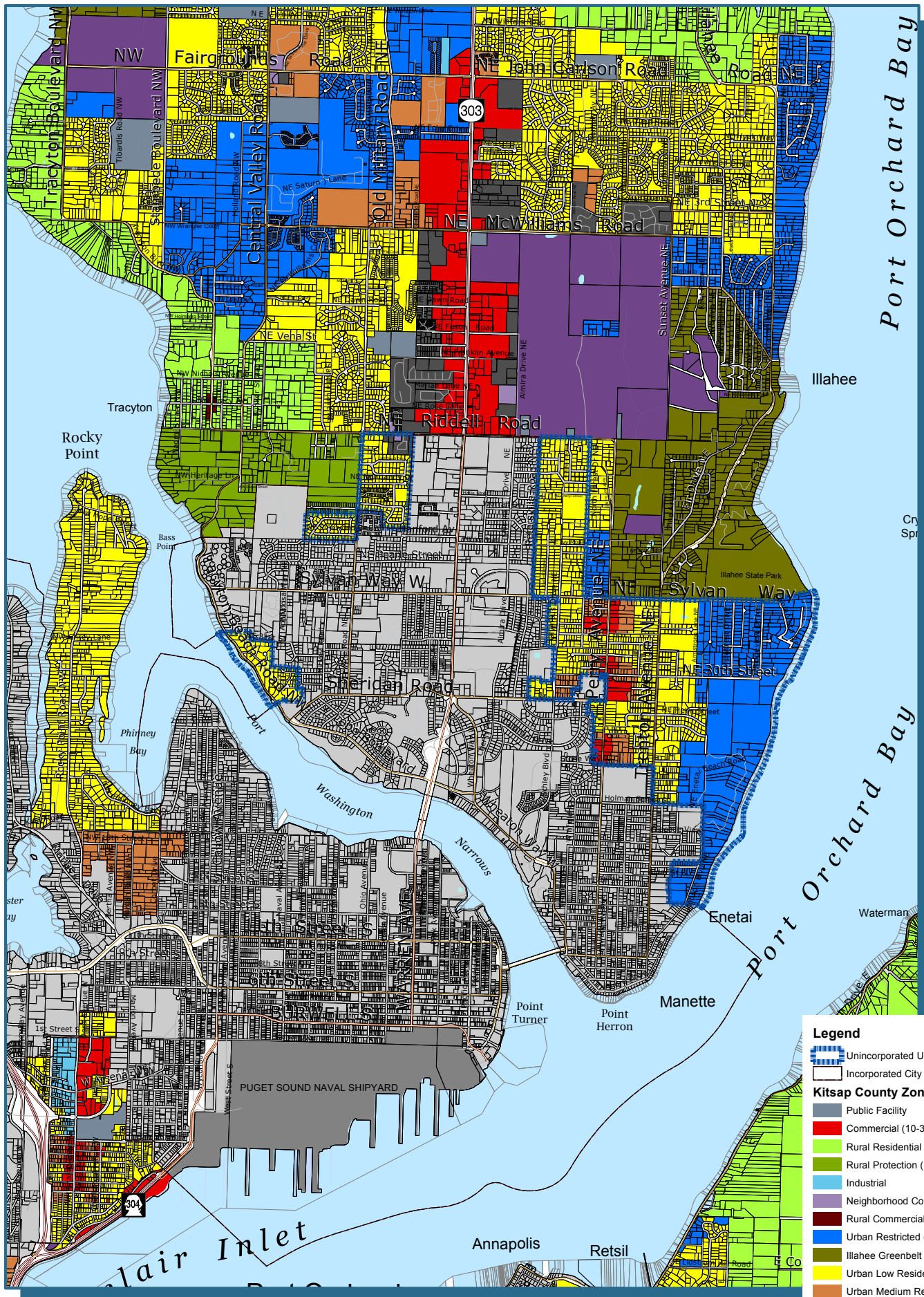
Bremerton East Urban Growth Area Alternative 2

Legend

- Unincorporated Urban Growth Area
- Incorporated City
- Kitsap County Zoning Designations**
- Commercial (10-30 DU/Ac)
- Public Facility
- Rural Residential (1 DU/5 Ac)
- Rural Protection (1 DU/10 Ac)
- Industrial
- Neighborhood Commercial (10-30 DU/Ac)
- Rural Commercial
- Urban Restricted (1-5 DU/Ac)
- Illahee Greenbelt (1-4 DU/Ac)
- Urban Low Residential (5-9 DU/Ac)
- Urban Medium Residential (10-18 DU/Ac)
- Urban High Residential (19-30 DU/Ac)
- Park (Kitsap County)
- Incorporated City
- Military



Kitsap County Department of Community Development
 614 Division Street, MS-36, Port Orchard, Washington 98366
 VOICE (360) 337-5777 * FAX (360) 337-4925



Bremerton East Urban Growth Area Alternative 3

Legend

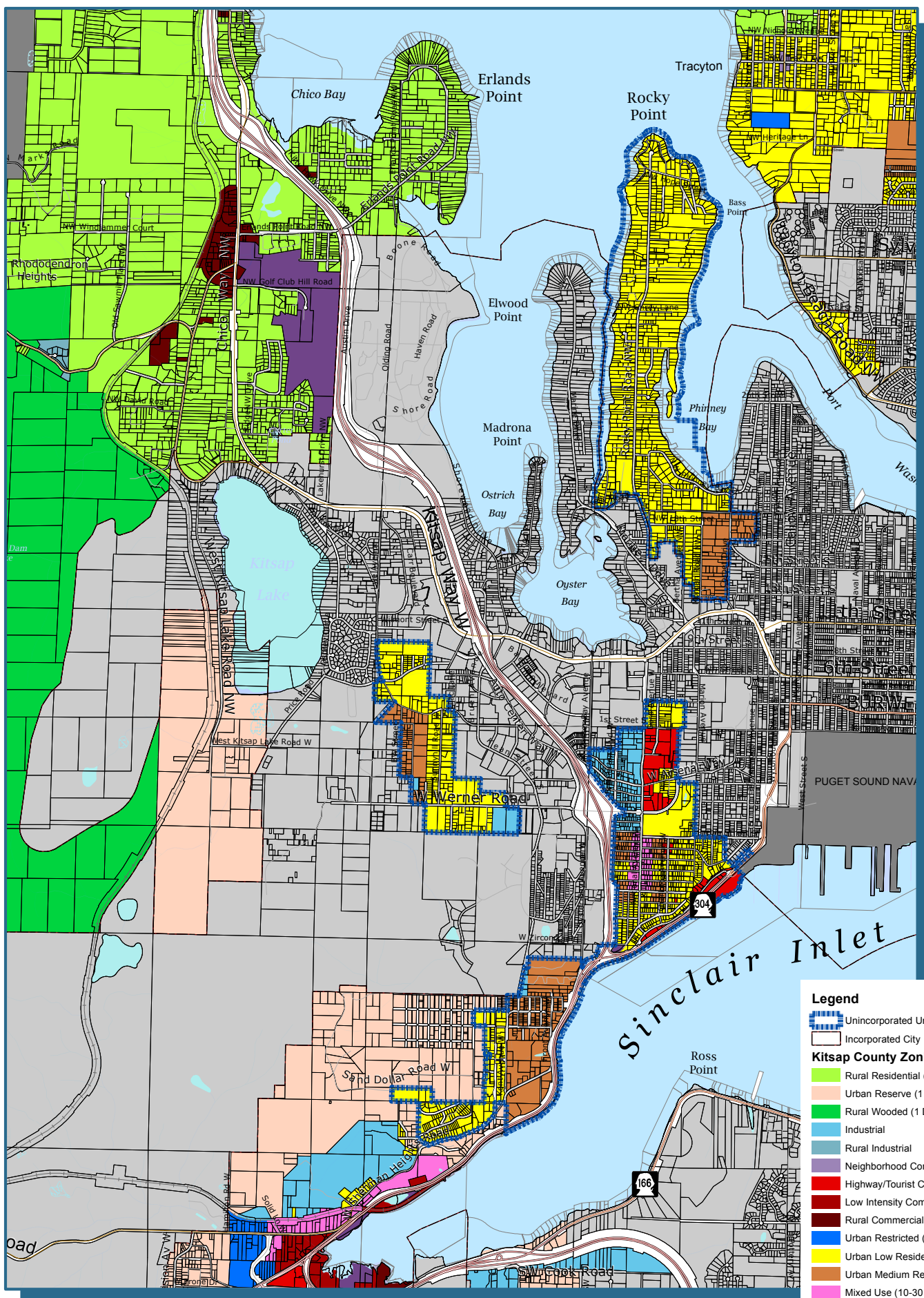
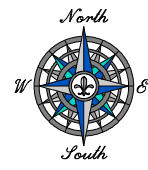
- Unincorporated Urban Growth Area
- Incorporated City

Kitsap County Zoning Designations

- Public Facility
- Commercial (10-30 DU/Ac)
- Rural Residential (1 DU/5 Ac)
- Rural Protection (1 DU/10 Ac)
- Industrial
- Neighborhood Commercial (10-30 DU/Ac)
- Rural Commercial
- Urban Restricted (1-5 DU/Ac)
- Illahee Greenbelt (1-4 DU/Ac)
- Urban Low Residential (5-9 DU/Ac)
- Urban Medium Residential (10-18 DU/Ac)
- Urban High Residential (19-30 DU/Ac)
- Park (Kitsap County)
- Incorporated City
- Military



Kitsap County Department of Community Development
 614 Division Street, MS-36, Port Orchard, Washington 98366
 VOICE (360) 337-5777 * FAX (360) 337-4925

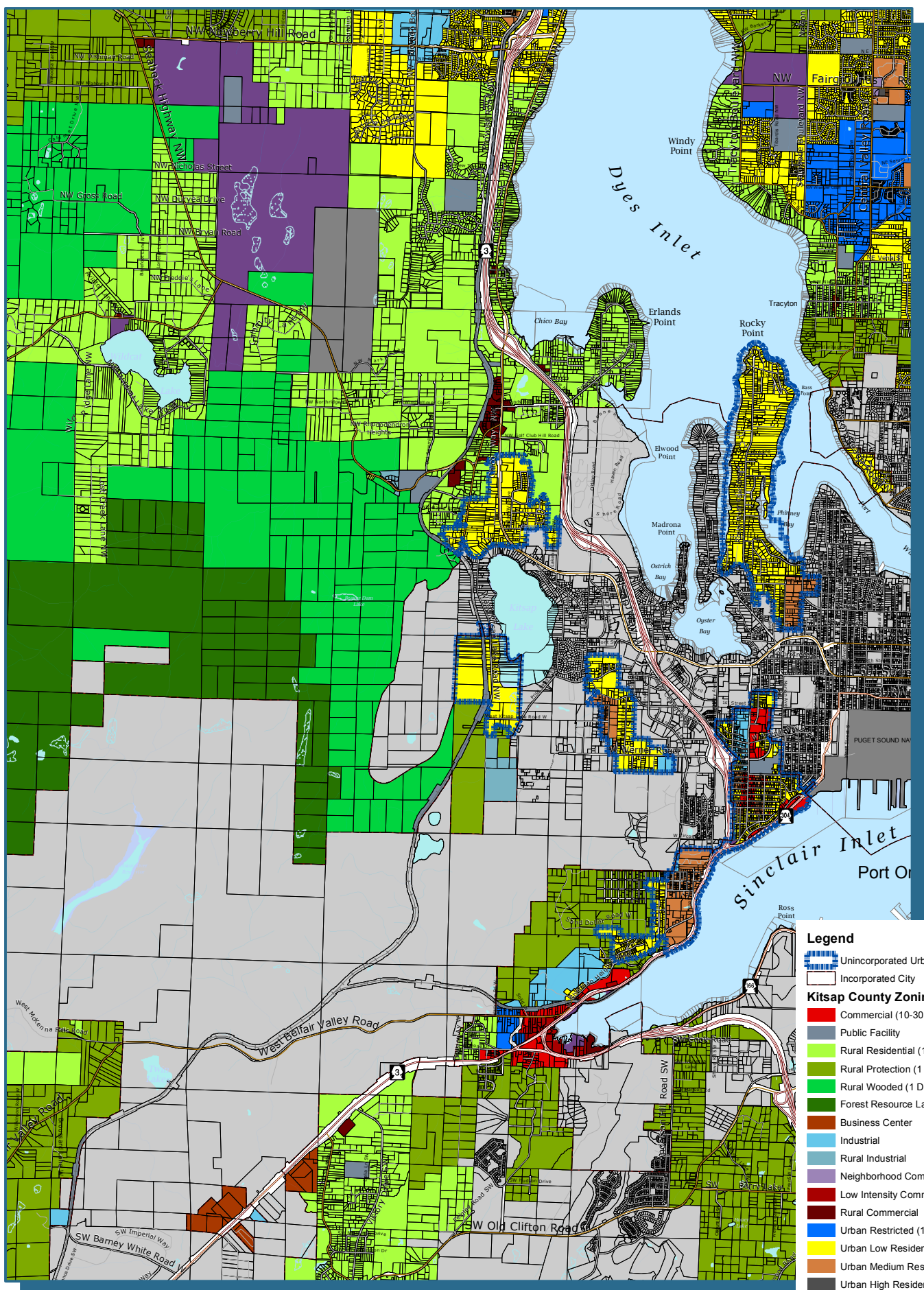


Bremerton West Urban Growth Area No Action Alternative

- Legend**
- Unincorporated Urban Growth Area
 - Incorporated City
- Kitsap County Zoning Designations**
- Rural Residential (1 DU/5 Ac)
 - Urban Reserve (1 DU/10 Ac)
 - Rural Wooded (1 DU/20 Ac)
 - Industrial
 - Rural Industrial
 - Neighborhood Commercial (10-30 DU/Ac)
 - Highway/Tourist Commercial (10-30 DU/Ac)
 - Low Intensity Commercial (10-30 DU/Ac)
 - Rural Commercial
 - Urban Restricted (1-5 DU/Ac)
 - Urban Low Residential (5-9 DU/Ac)
 - Urban Medium Residential (10-18 DU/Ac)
 - Mixed Use (10-30 DU/Ac)
 - Park (Kitsap County)
 - Incorporated City
 - Military
 - Lake



Kitsap County Department of Community Development
 614 Division Street, MS-36, Port Orchard, Washington 98366
 VOICE (360) 337-5777 * FAX (360) 337-4925

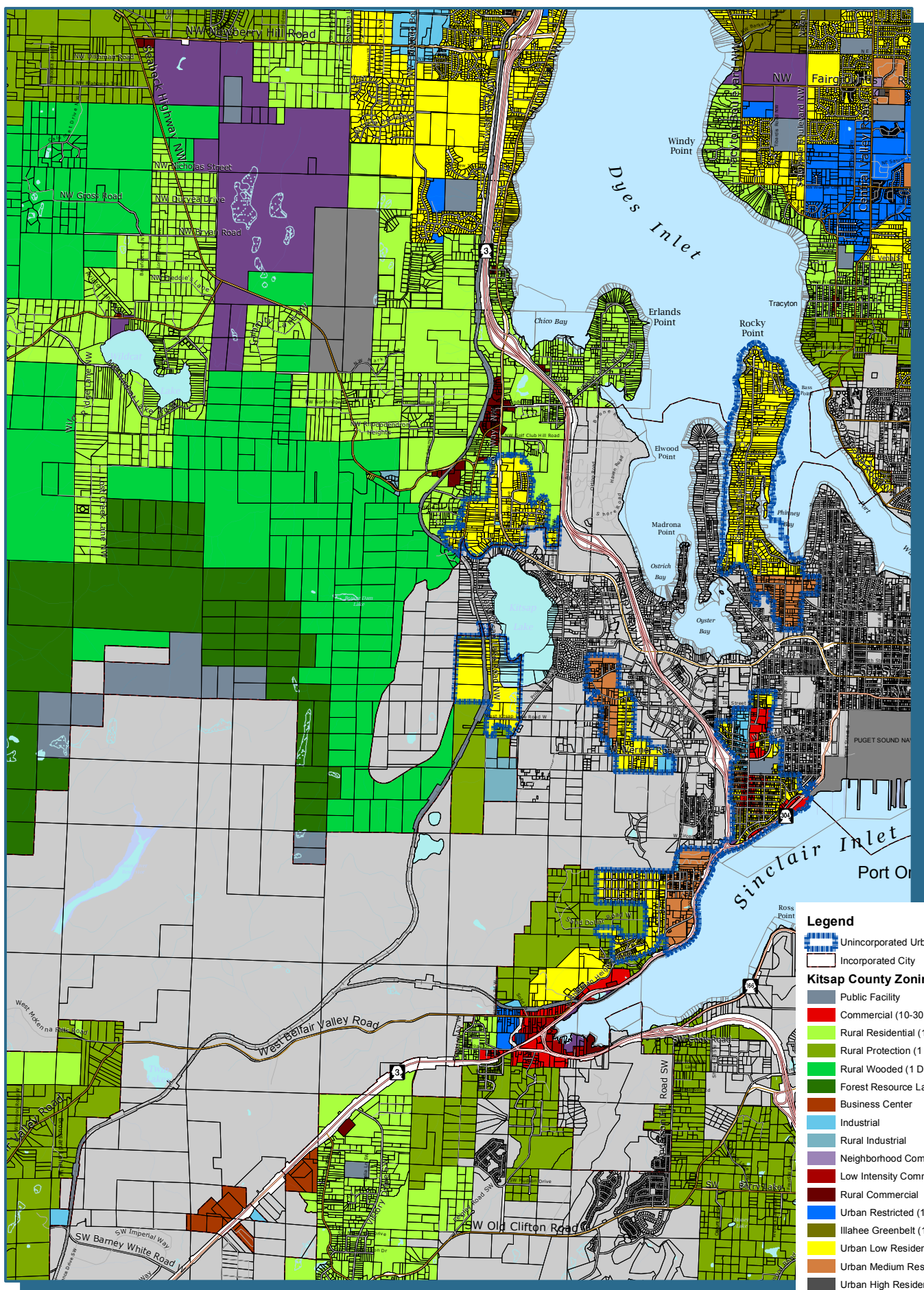


Bremerton West Urban Growth Area Alternative 2

- Legend**
- Unincorporated Urban Growth Area
 - Incorporated City
 - Kitsap County Zoning Designations**
 - Commercial (10-30 DU/Ac)
 - Public Facility
 - Rural Residential (1 DU/5 Ac)
 - Rural Protection (1 DU/10 Ac)
 - Rural Wooded (1 DU/20 Ac)
 - Forest Resource Lands (1 DU/40 Ac)
 - Business Center
 - Industrial
 - Rural Industrial
 - Neighborhood Commercial (10-30 DU/Ac)
 - Low Intensity Commercial (10-30 DU/Ac)
 - Rural Commercial
 - Urban Restricted (1-5 DU/Ac)
 - Urban Low Residential (5-9 DU/Ac)
 - Urban Medium Residential (10-18 DU/Ac)
 - Urban High Residential (19-30 DU/Ac)
 - Park (Kitsap County)
 - Incorporated City
 - Military
 - Lake



Kitsap County Department of Community Development
 614 Division Street, MS-36, Port Orchard, Washington 98366
 VOICE (360) 337-5777 * FAX (360) 337-4925

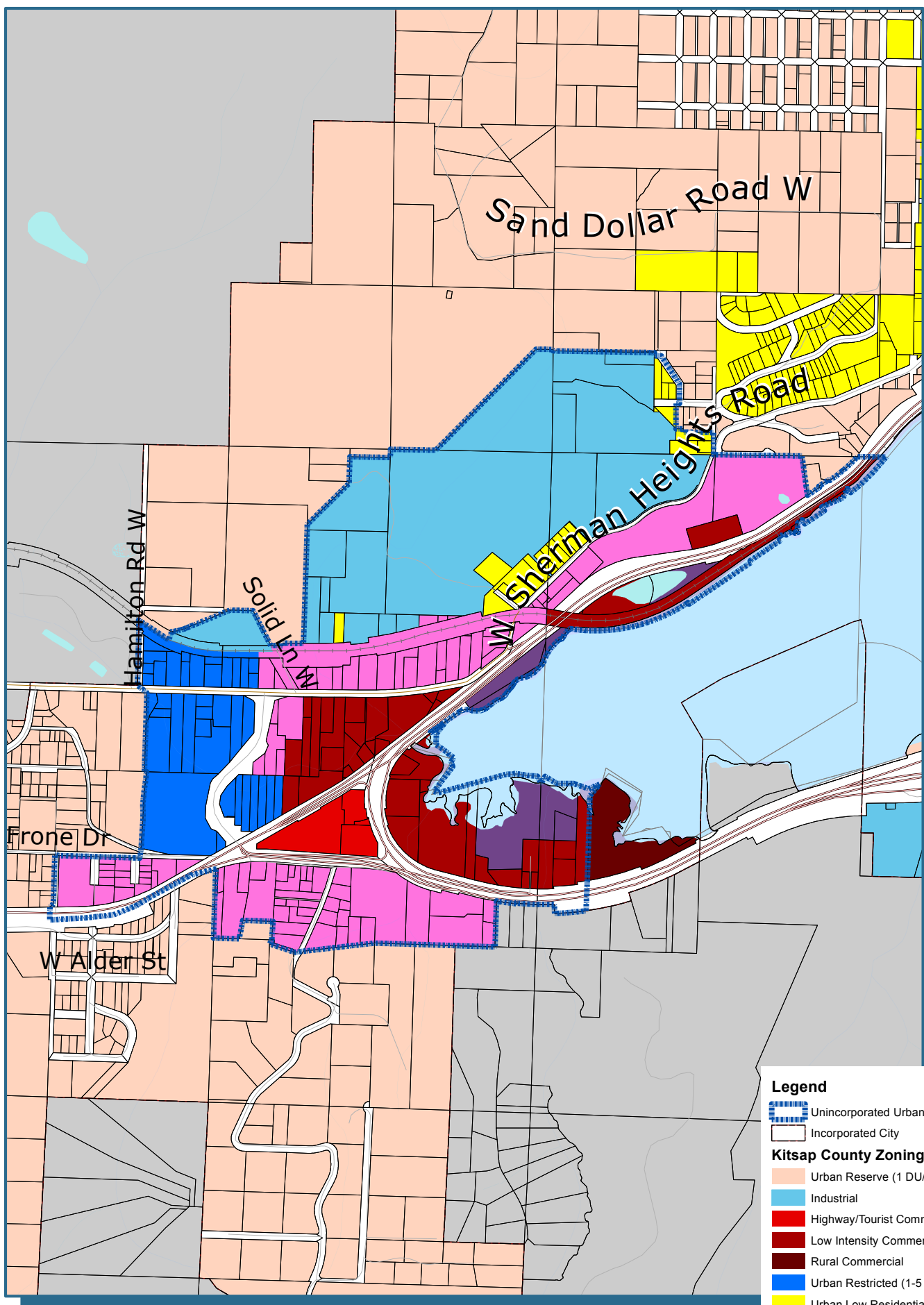
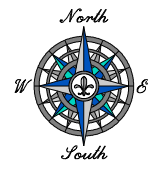


Bremerton West Urban Growth Area Alternative 3

- Legend**
- Unincorporated Urban Growth Area
 - Incorporated City
- Kitsap County Zoning Designations**
- Public Facility
 - Commercial (10-30 DU/Ac)
 - Rural Residential (1 DU/5 Ac)
 - Rural Protection (1 DU/10 Ac)
 - Rural Wooded (1 DU/20 Ac)
 - Forest Resource Lands (1 DU/40 Ac)
 - Business Center
 - Industrial
 - Rural Industrial
 - Neighborhood Commercial (10-30 DU/Ac)
 - Low Intensity Commercial (10-30 DU/Ac)
 - Rural Commercial
 - Urban Restricted (1-5 DU/Ac)
 - Illahee Greenbelt (1-4 DU/Ac)
 - Urban Low Residential (5-9 DU/Ac)
 - Urban Medium Residential (10-18 DU/Ac)
 - Urban High Residential (19-30 DU/Ac)
 - Park (Kitsap County)
 - Incorporated City
 - Military
 - Lake



Kitsap County Department of Community Development
 614 Division Street, MS-36, Port Orchard, Washington 98366
 VOICE (360) 337-5777 * FAX (360) 337-4925



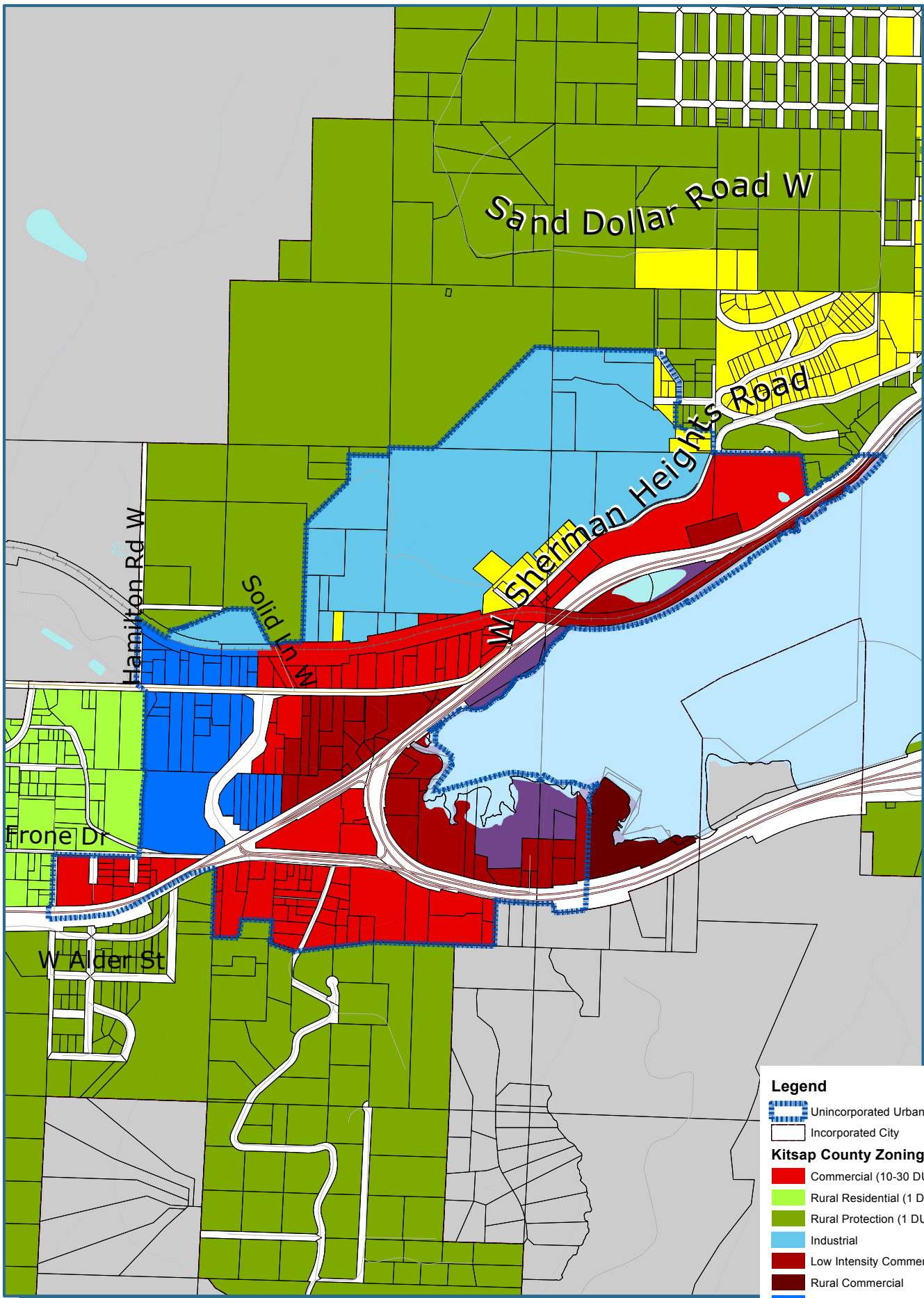
Gorst Urban Growth Area No Action Alternative

Legend

- Unincorporated Urban Growth Area
- Incorporated City
- Kitsap County Zoning Designations**
- Urban Reserve (1 DU/10 Ac)
- Industrial
- Highway/Tourist Commercial (10-30 DU/Ac)
- Low Intensity Commercial (10-30 DU/Ac)
- Rural Commercial
- Urban Restricted (1-5 DU/Ac)
- Urban Low Residential (5-9 DU/Ac)
- Mixed Use (10-30 DU/Ac)
- Park (Kitsap County)
- Incorporated City



Kitsap County Department of Community Development
 614 Division Street, MS-36, Port Orchard, Washington 98366
 VOICE (360) 337-5777 * FAX (360) 337-4925



Gorst Urban Growth Area Alternative 2

Legend

Unincorporated Urban Growth Area

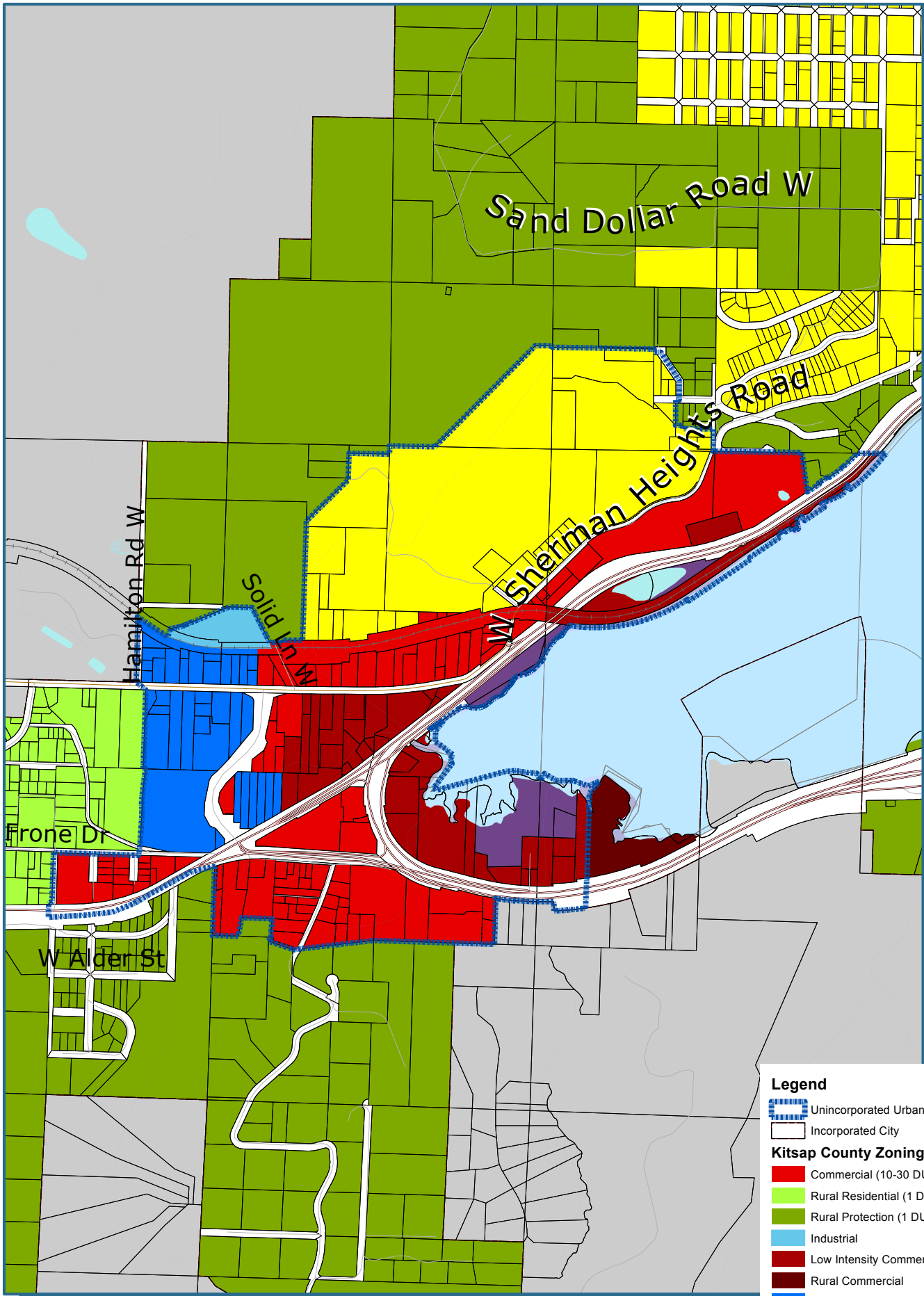
Incorporated City

Kitsap County Zoning Designations

- Commercial (10-30 DU/Ac)
- Rural Residential (1 DU/5 Ac)
- Rural Protection (1 DU/10 Ac)
- Industrial
- Low Intensity Commercial (10-30 DU/Ac)
- Rural Commercial
- Urban Restricted (1-5 DU/Ac)
- Urban Low Residential (5-9 DU/Ac)
- Park (Kitsap County)
- Incorporated City



Kitsap County Department of Community Development
614 Division Street, MS-36, Port Orchard, Washington 98366
VOICE (360) 337-5777 * FAX (360) 337-4925



Gorst Urban Growth Area Alternative 3

Legend

Unincorporated Urban Growth Area

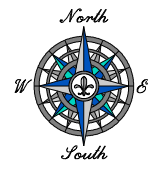
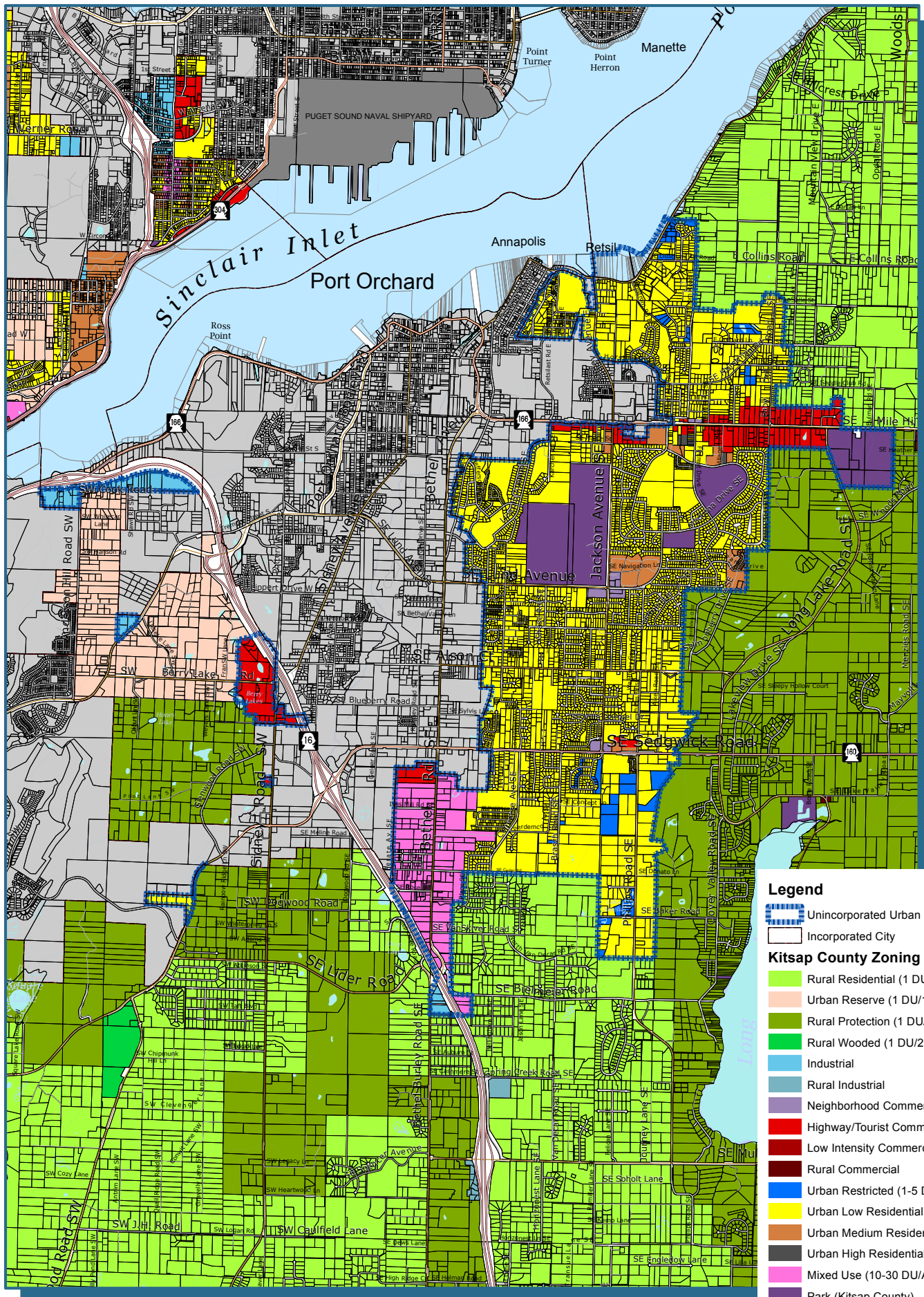
Incorporated City

Kitsap County Zoning Designations

- Commercial (10-30 DU/Ac)
- Rural Residential (1 DU/5 Ac)
- Rural Protection (1 DU/10 Ac)
- Industrial
- Low Intensity Commercial (10-30 DU/Ac)
- Rural Commercial
- Urban Restricted (1-5 DU/Ac)
- Urban Low Residential (5-9 DU/Ac)
- Park (Kitsap County)
- Incorporated City



Kitsap County Department of Community Development
 614 Division Street, MS-36, Port Orchard, Washington 98366
 VOICE (360) 337-5777 * FAX (360) 337-4925



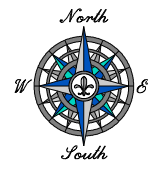
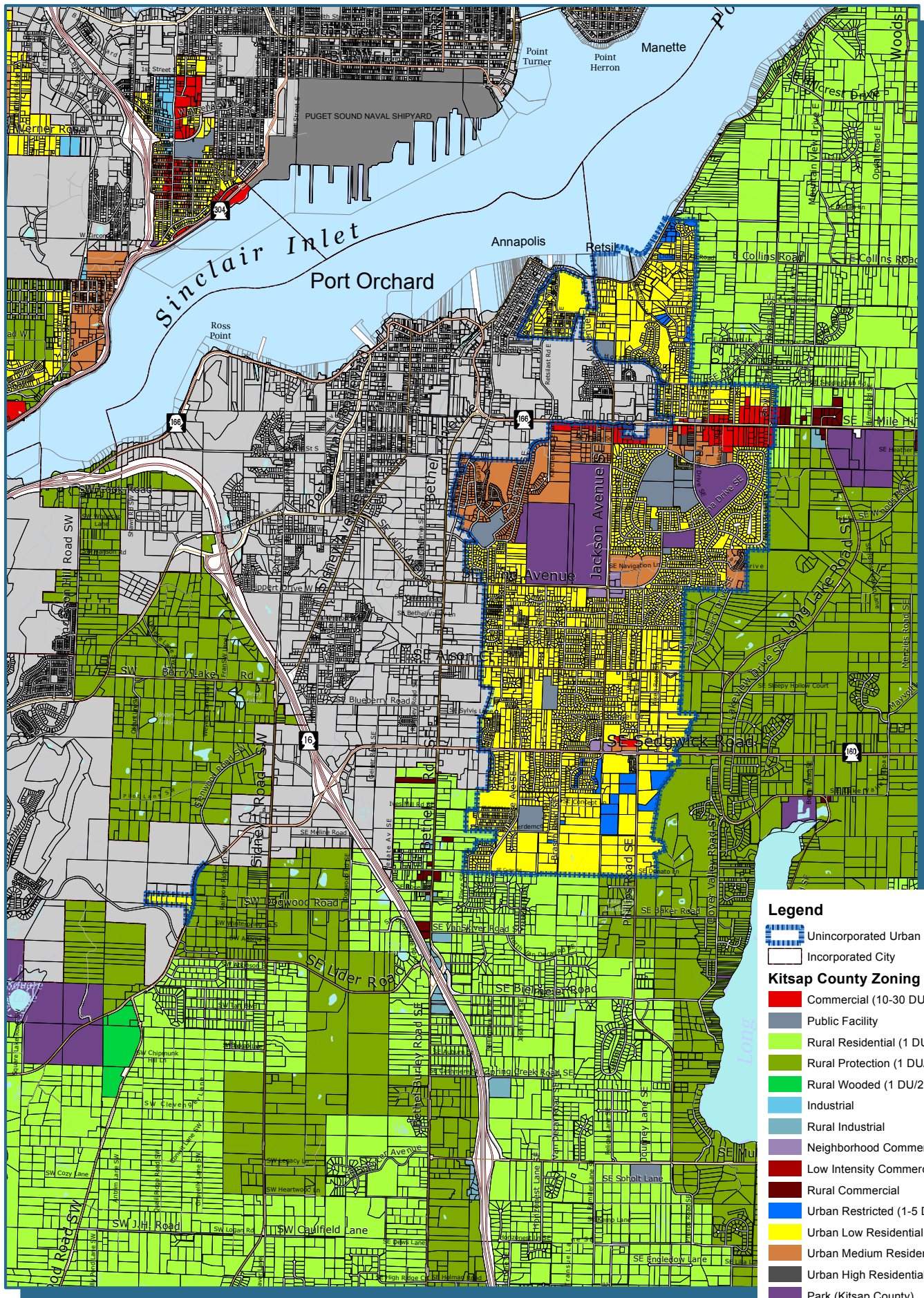
Port Orchard Urban Growth Area No Action Alternative

Legend

- Unincorporated Urban Growth Area
- Incorporated City
- Kitsap County Zoning Designations**
- Rural Residential (1 DU/5 Ac)
- Urban Reserve (1 DU/10 Ac)
- Rural Protection (1 DU/10 Ac)
- Rural Wooded (1 DU/20 Ac)
- Industrial
- Rural Industrial
- Neighborhood Commercial (10-30 DU/Ac)
- Highway/Tourist Commercial (10-30 DU/Ac)
- Low Intensity Commercial (10-30 DU/Ac)
- Rural Commercial
- Urban Restricted (1-5 DU/Ac)
- Urban Low Residential (5-9 DU/Ac)
- Urban Medium Residential (10-18 DU/Ac)
- Urban High Residential (19-30 DU/Ac)
- Mixed Use (10-30 DU/Ac)
- Park (Kitsap County)
- Incorporated City
- Military
- Lake



Kitsap County Department of Community Development
 614 Division Street, MS-36, Port Orchard, Washington 98366
 VOICE (360) 337-5777 * FAX (360) 337-4925



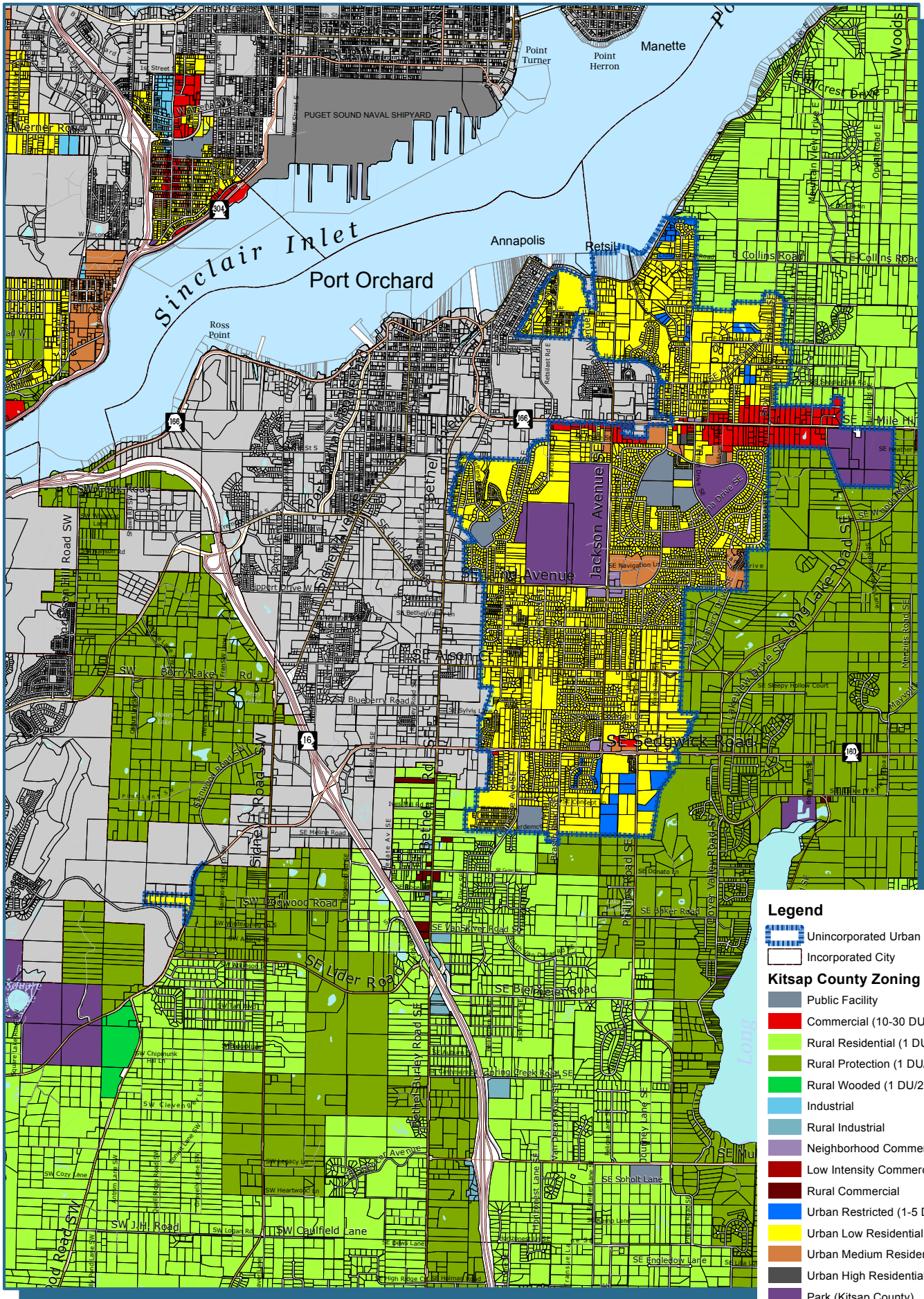
Port Orchard Urban Growth Area Alternative 2

Legend

- Unincorporated Urban Growth Area
- Incorporated City
- Kitsap County Zoning Designations**
- Commercial (10-30 DU/Ac)
- Public Facility
- Rural Residential (1 DU/5 Ac)
- Rural Protection (1 DU/10 Ac)
- Rural Wooded (1 DU/20 Ac)
- Industrial
- Rural Industrial
- Neighborhood Commercial (10-30 DU/Ac)
- Low Intensity Commercial (10-30 DU/Ac)
- Rural Commercial
- Urban Restricted (1-5 DU/Ac)
- Urban Low Residential (5-9 DU/Ac)
- Urban Medium Residential (10-18 DU/Ac)
- Urban High Residential (19-30 DU/Ac)
- Park (Kitsap County)
- Incorporated City
- Military
- Lake



Kitsap County Department of Community Development
 614 Division Street, MS-36, Port Orchard, Washington 98366
 VOICE (360) 337-5777 * FAX (360) 337-4925



Port Orchard Urban Growth Area Alternative 3

Legend

- Unincorporated Urban Growth Area
- Incorporated City
- Kitsap County Zoning Designations**
- Public Facility
- Commercial (10-30 DU/Ac)
- Rural Residential (1 DU/5 Ac)
- Rural Protection (1 DU/10 Ac)
- Rural Wooded (1 DU/20 Ac)
- Industrial
- Rural Industrial
- Neighborhood Commercial (10-30 DU/Ac)
- Low Intensity Commercial (10-30 DU/Ac)
- Rural Commercial
- Urban Restricted (1-5 DU/Ac)
- Urban Low Residential (5-9 DU/Ac)
- Urban Medium Residential (10-18 DU/Ac)
- Urban High Residential (19-30 DU/Ac)
- Park (Kitsap County)
- Incorporated City
- Military
- Lake



Kitsap County Department of Community Development
 614 Division Street, MS-36, Port Orchard, Washington 98366
 VOICE (360) 337-5777 * FAX (360) 337-4925